

BASIC INFORMATION



This product is ideal for curtain control both manually and intelligently; you can take full control of your curtains with the three buttons on the switch or use TIS App to open, close or adjust the curtain status.

WARNINGS & SAFETY INSTRUCTIONS



The following must be read, kept, and observed before installation:

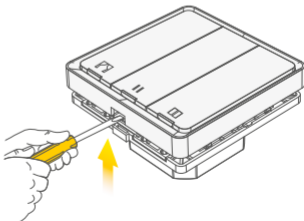
- Installation must be carried out by a qualified electrician in accordance with local regulations.
- Keep the device out of the reach of children and away from water and damp or hot environments.
- Install the device away from strong signal sources, such as microwave ovens, which may cause signal interruption resulting in abnormal device operation.
- Obstruction by concrete walls or metallic materials may reduce the effective operation range of the device and should be avoided.
- Do not attempt to disassemble, repair, or modify the device by yourself.

MOUNTING THE DEVICE

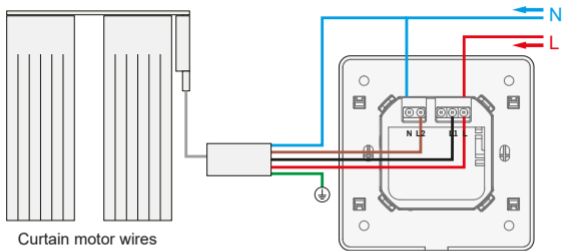
- 1 Turn off the power supply before carrying out any electrical installation work.



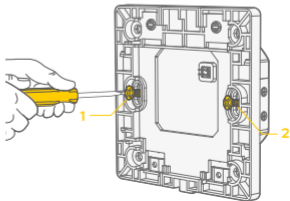
- 2 Remove the switch cover



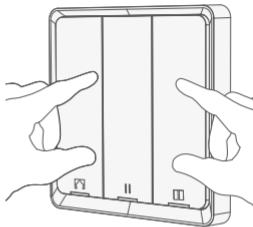
- 3** Connect the power supply and follow curtain switch module configuration instructions.



- 4** Using the screws provided, attach the switch.



- 5** At this point, reattach the cover.



- 6** Connect the power supply and follow curtain switch module configuration instructions.



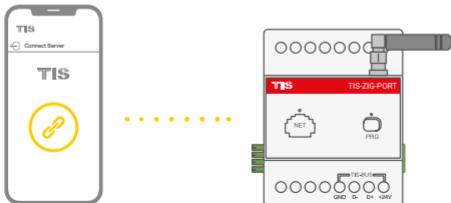
CONFIGURATION

1 Download the App

Search for TIS Control & download the app

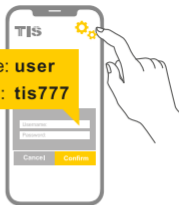


2 Set up your hub (if not already set in the application)

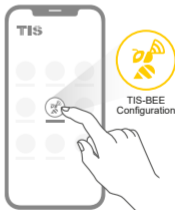


- 3 Go to Settings, and enter the default username and password

Username: **user**
Password: **tis777**



- 4 Go to the TIS-BEE configuration button, and follow the instructions



5 Add the Device

In the TIS-Bee configuration, press Add Device. Then, follow the instructions to add the device using the 2 available methods



Select whichever method you prefer, and follow the instructions on the app

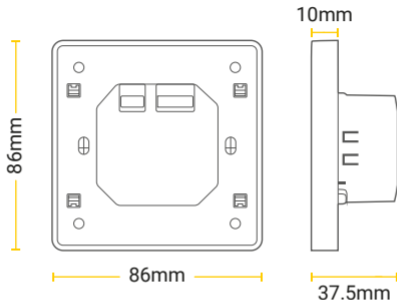


a. Scan QR Method



b. Search Method

TECHNICAL SPECIFICATIONS



Communication Protocol

Wi-Fi 2.4GHz & Zigbee® 3.0

Operating temperature

-10°C ~ +45°C

Case temperature

Tc: +80°C (Max.)

Input

220 - 240 v

Material

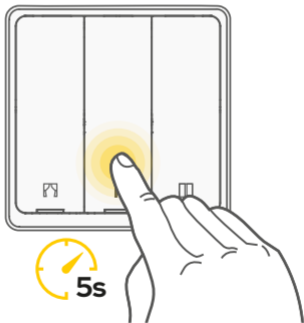
Plastic

Wattage

96W

RESET TO FACTORY DEFAULT

- ▶ Press the reset button for 5 seconds to start to reset of Wi-Fi method.



TROUBLESHOOTING

Problem	Possible Cause	Solution
Unable to pair	Detector is away from the hub, or there are obstacles.	Move detector closer to the hub.
	The Wi-Fi password is entered incorrectly	Reset to the factory default and enter the right password
	The Wi-Fi signal is more than 2.4GHz	Reset the switch to factory default and make sure the Wi-Fi signal is no more than 2.4GHz

Product specifications, size, shape, and prices are subject to change without notice, and actual product appearance may differ from that depicted on the packaging.



FLAT/RM A 12/F ZJ 300, 300 LOCKHART
ROAD, WAN CHAI, HONG KONG



www.tiscontrol.com



TIS BEE

Dione Curtain Switch

User Manual



Please read the user manual carefully before operation