

INSTALLATION MANUAL

TIS THERMOSTAT PANEL

Thermostatic Switch with 4 Buttons

Model: IO-AC-4G



PRODUCT INFORMATION

This product is a BUS-operated wall switch with a rotating knob and push buttons for smart control over indoor climate, lights and motorized curtains. This switch is available in black and white and features customizable LED beklit for more applicability.

PRODUCT SPECIFICATIONS

	Input	Temp /Humidity sensor Using Panel Addition	0-100C / 0-99% RH 2-3 Digital inputs
	Output	Using panel addition 3R Using panel addition 3DL-12V Using panel addition 2DL-IRE	3 relay output 3A/5A 12V DC 50mA output IR Emitter
	TIS Bus	Number of devices on 1 line Bus voltage Current consumption	Max. 64 12-32 V DC <50 mA / 24 V DC
	Operation	Display Rotating Knob push buttons TIS bus	2.3-inch OLED Screen 1× Rotating and pushing knob 4 push buttons with White/Orange LED TIS Protocol messages and commands
	Functions	Rotating / Press (knob) 1 Press (push button) Long press (push button) Double click (push button)	Change Temperature / AC ON-OFF ON/OFF/Scene Dim or ramp the lights Extra Scene
	Dimensions	Width × Length × Height	94mm × 23mm(including knob) × 129mm
	Housing	Materials Casing color Internal parts color IP rating	Fireproof PC / acrylic in front Silver plating frame, acrylic white or black Black / White IP 50



BARCODE (UPC-A)





Read Instructions

We recommend that you read this Instruction Manual before installation.



Data Cable

Use screened stranded RS485 data cable with four twisted pairs. Configure devices in a "Daisy Chain."

Do not cut or terminate live data cables.



Safety instructions

Electrical equipment should only be installed and fitted by electrically skilled persons.

Failure to follow the instructions may cause damage to the device and other hazards.

These instructions are an integral part of the product and must remain with the end customer.



Electrical Wires

The recommended wire size for light channels is 1.5mm - 2.5mm for loads, if you are using the Panel Addition 3R type. The installer should consider the total current consumption when selecting the wires.



Programming

This device can be tested and programmed manually. Advanced programming requires knowledge of the TIS Device Search software and instruction in the TIS advanced training courses.



Warranty

There is a two-year warranty provided by law. The hologram warranty seal and product serial number are available on each device.



Simple Installation

You can use 2 screws to install this panel on wall; it fits on most junction box sizes.



Mounting Location

Install in a dry, indoor area with a suitable temperature and humidity range.

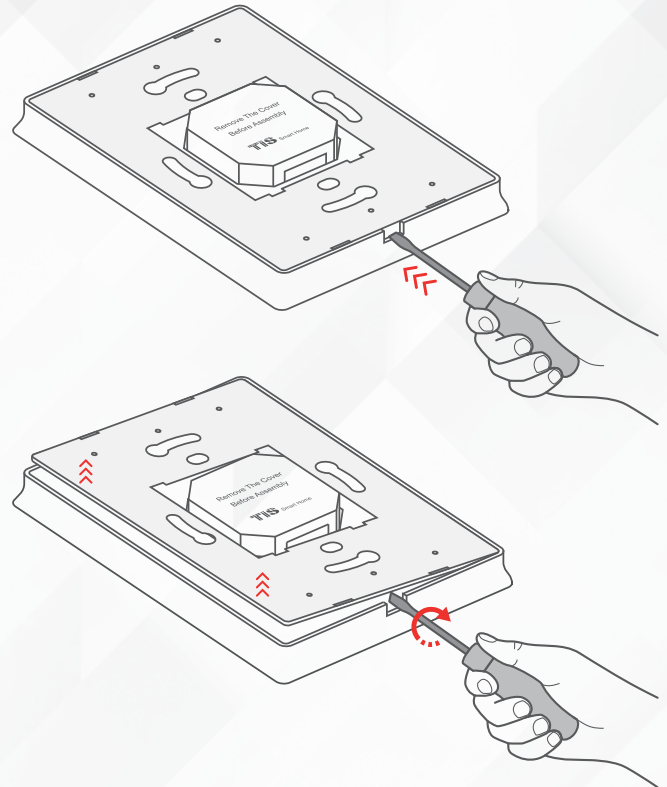




INSTALLATION STEPS

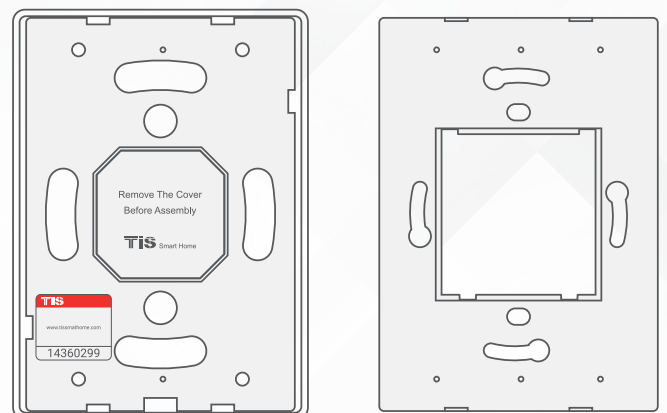
1»

Insert a large flathead screwdriver in the hole of the Panel Cover. Rotate the screwdriver 90 degrees.



2»

Separate the Cover, Main Panel, and Wall Base from each other.

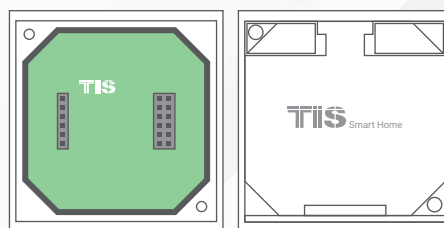
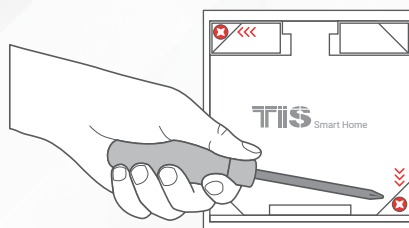




INSTALLATION STEPS

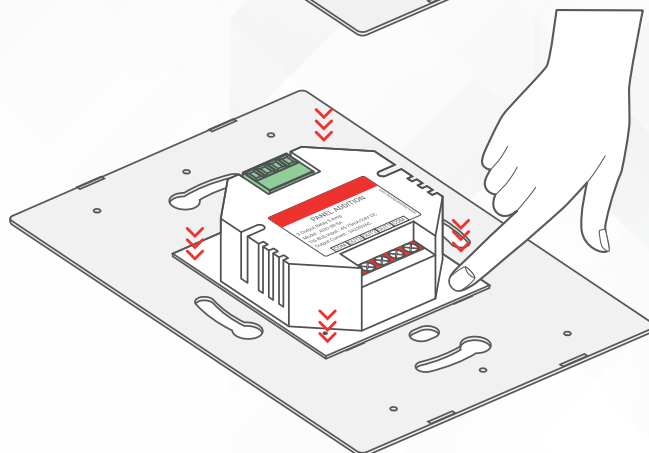
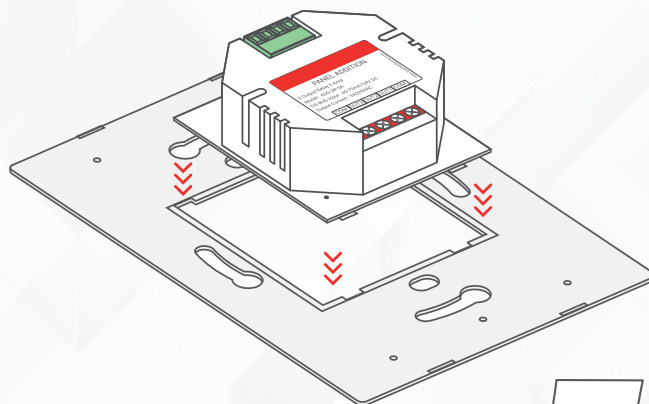
3

Remove the 2 screws on the Panel Addition cover.



4

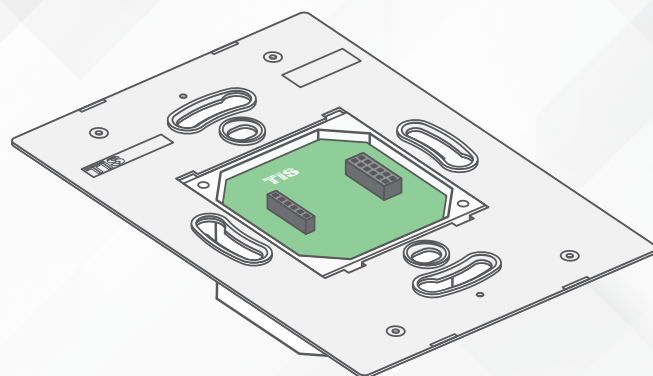
Connect the Wall Base and Panel Addition in this position. Place the upper pins as shown, and then push the down pins down with your fingers to assemble.





INSTALLATION STEPS

It should look like this following the correct assembly.



5»

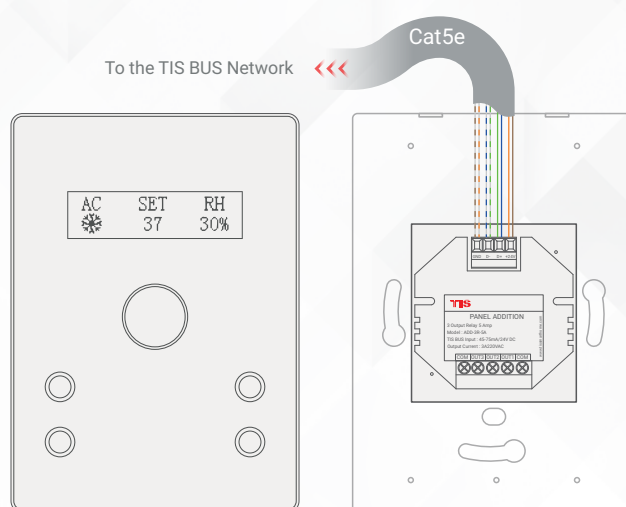
Turn off the main electrical source before installation.



WARNING! HIGH VOLTAGE

6»

Connect the Cat5e TIS BUS wire to the Panel Addition.





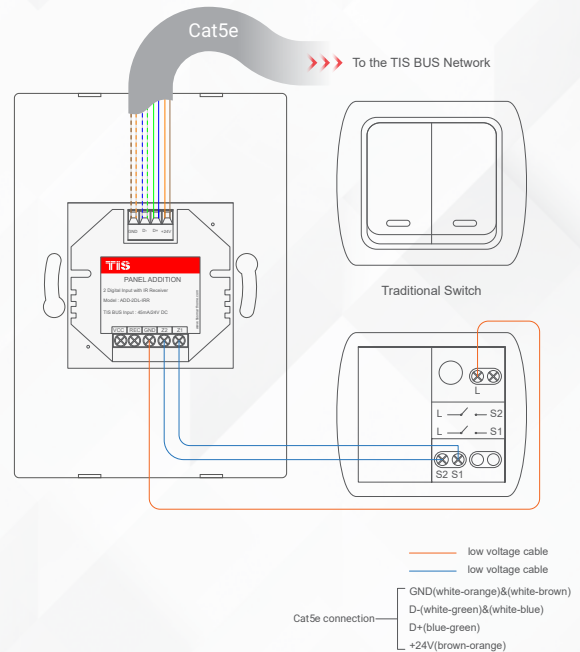
INSTALLATION STEPS



Connect the other connection if needed as per the panel addition type.

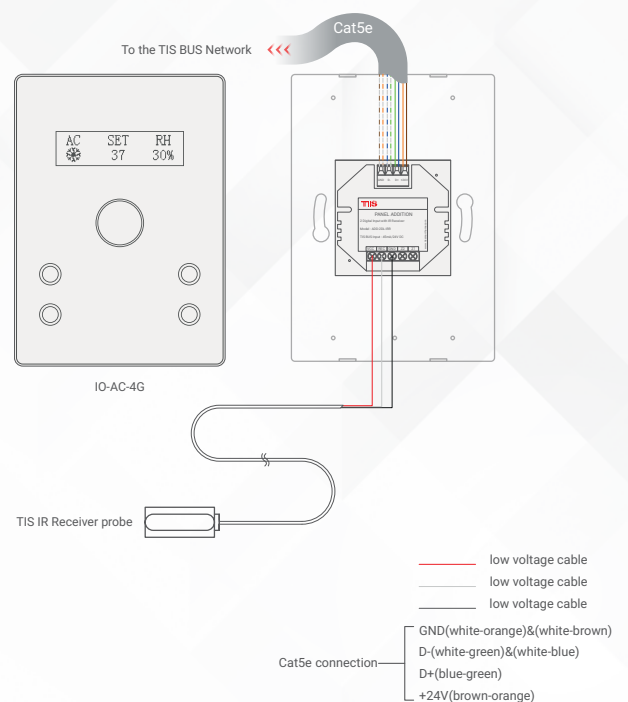
» FOR PANEL ADDITION 2DL-IRR

You can connect 2 digital inputs to any switch or window magnet.



» You can add an External Infrared Receiver to the IRR Port, connect as follows:

- ▶ the IR Receiver black wire to GND
- ▶ Gray wire to REC
- ▶ Red wire to VCC Terminal.



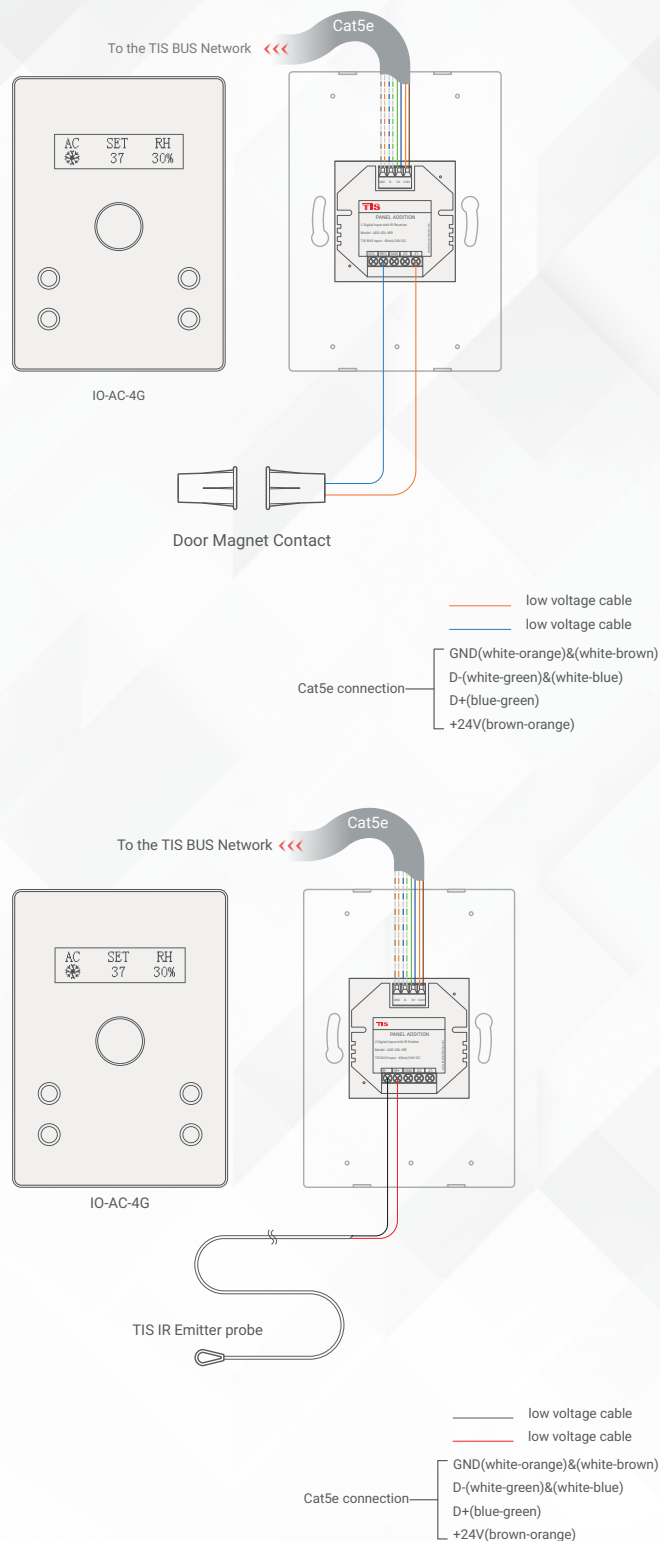


INSTALLATION STEPS

» FOR PANEL ADDITION 2DL-IRE

You can connect 2 digital inputs to any switch or window magnet.

- ▶ Connect the IR Emitter Probe's positive wire to IR+ terminal.
- ▶ Connect the negative wire to IR-terminal.



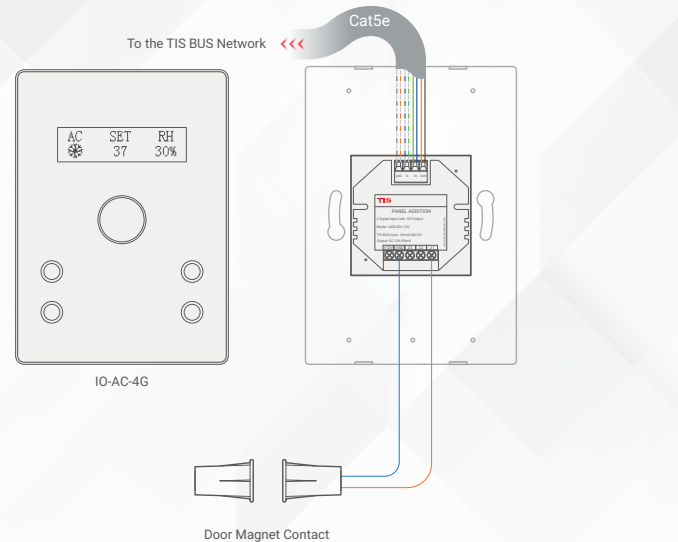


INSTALLATION STEPS

» FOR PANEL ADDITION 3DL-12V

You can connect 3 digital inputs to any switch or window magnet.

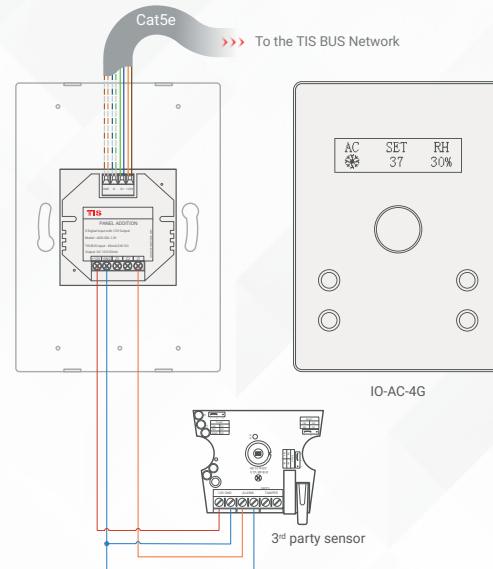
» Also, you can connect any 12V operated smoke detector or any 3rd party sensor with NC/NO connection to the 12V GND and Z1-Z3 terminals as per the diagram.



low voltage cable
low voltage cable

Cat5e connection

- GND(white-orange)&(white-brown)
- D-(white-green)&(white-blue)
- D+(blue-green)
- +24V(brown-orange)



low voltage cable
low voltage cable
low voltage cable

Cat5e connection

- GND(white-orange)&(white-brown)
- D-(white-green)&(white-blue)
- D+(blue-green)
- +24V(brown-orange)



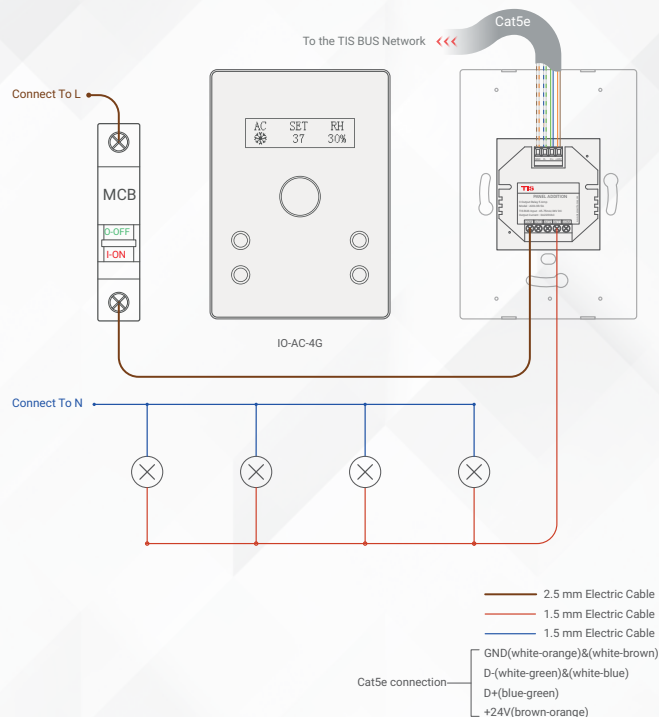
INSTALLATION STEPS

» FOR PANEL ADDITION 3R-5A



LIGHTING CONNECTION

- ▶ Connect the live wire to COM
- ▶ Connect the loads wire to Out1-Out3 to terminals
- ▶ Connect load neutral wire to main neutral in the distributor box.

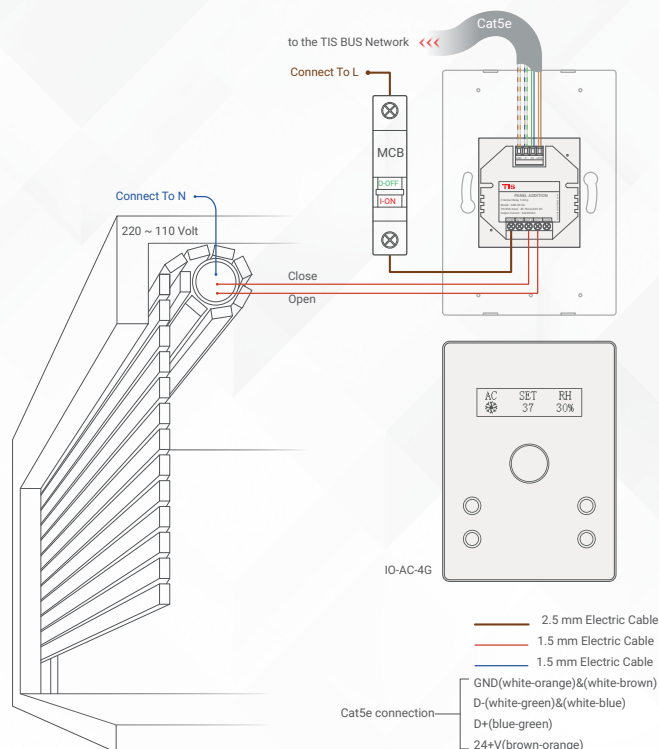


SHUTTER / CURTAIN CONNECTION

- ▶ Connect the Supply wire to COM
- ▶ Connect the Open wire to OUT1
- ▶ Connect the Close wire to OUT2
- ▶ Shutter neutral connection, if it exists, can be looped to main neutral in the distributor box.



WARNING: Set the curtain function in the software before connecting the wires.





INSTALLATION STEPS

» FOR PANEL ADDITION 3R-5A

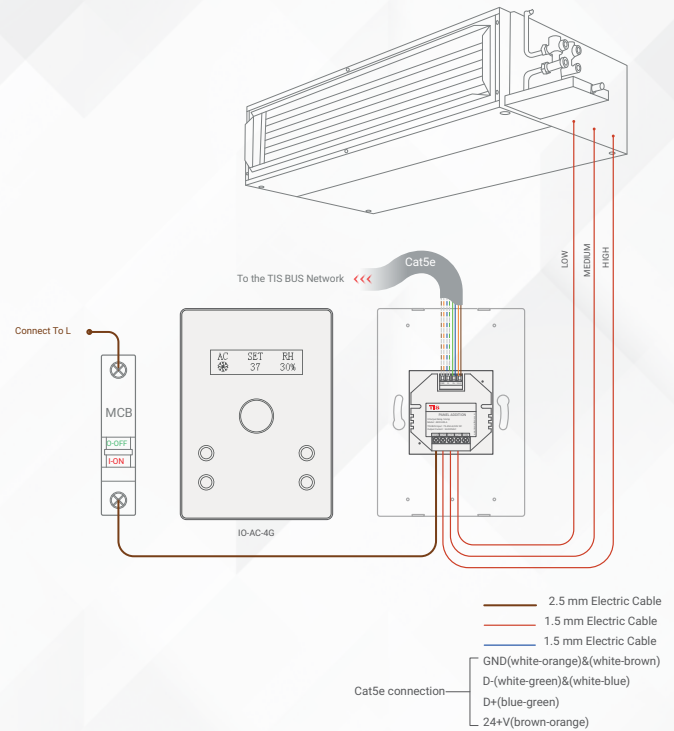


FCU CONNECTION

- ▶ Connect the supply wire to com
- ▶ Connect the FAN Low, Medium, and High wires to Out1, Out2, and Out3 in the same order.



WARNING: Set the FCU function in the software before connecting the wires.

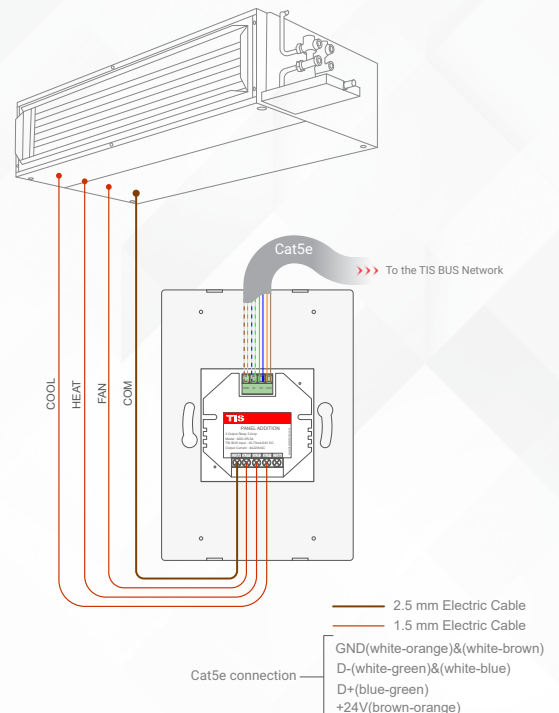


HVAC CONNECTION

- ▶ Connect the HVAC COM (supply) wire to COM
- ▶ Connect the Cool, Heat, and FAN wires to Out1, Out2, and Out3 in the same order.



WARNING: Set the HVAC function in the software before connecting the wires.



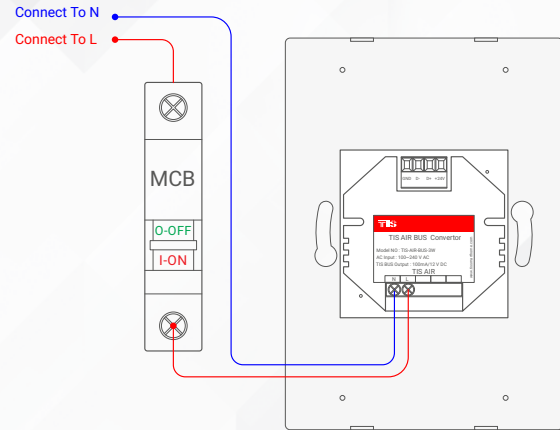


INSTALLATION STEPS



FOR PANEL ADDITION AIR-BUS-3W

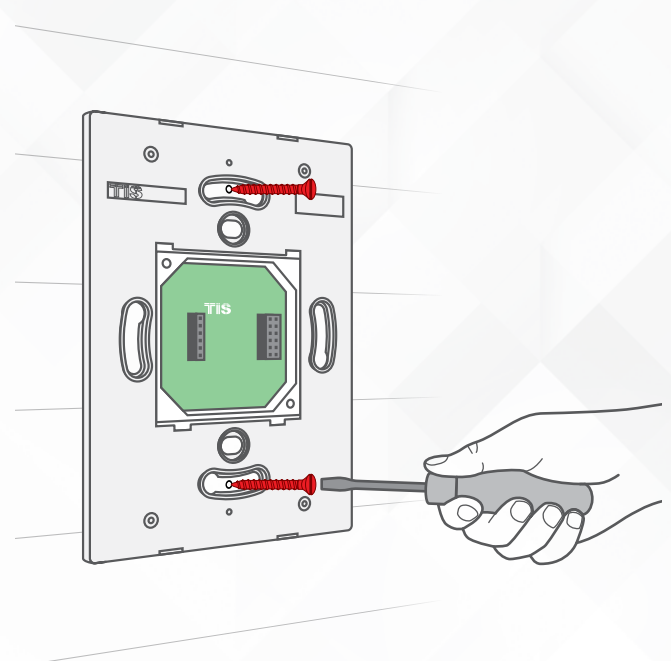
- ▶ Connect the live wire to the L terminal,
- ▶ Connect the neutral wire to N terminal.



— 1.5 mm Electric Cable
— 1.5 mm Electric Cable



- 8 Mount the device on the wall using 2 screws on the junction box.

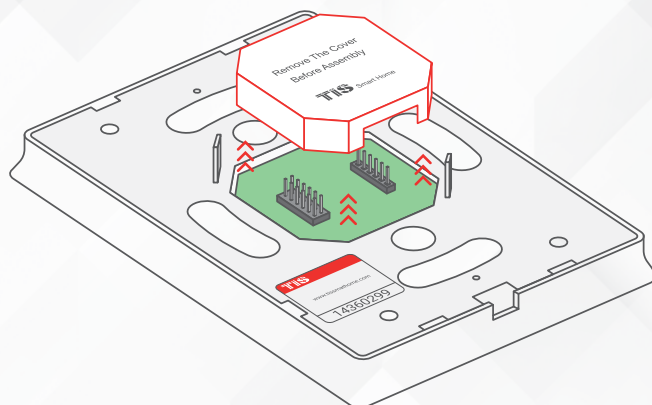




INSTALLATION STEPS

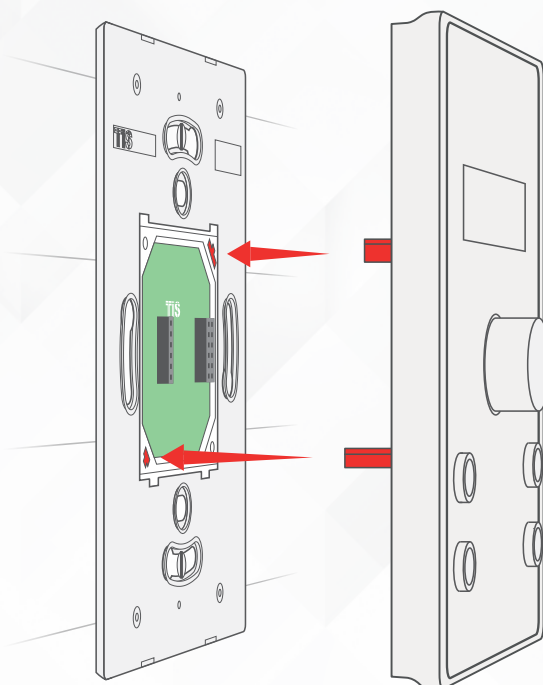
9»

Using your fingers, pull the protective plastic cover vertically, remove it, and throw it away.



10»

Connect the main Luna panel vertically to the part installed on the wall; install the upper part by making sure the buckles are completely inside.





INSTALLATION STEPS

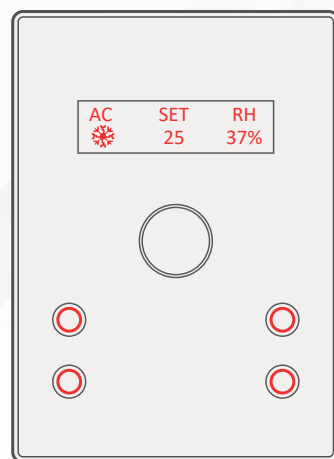
11 »

Push on the bottom part of the main panel to fix it to the wall and complete the assembly.



12 »

Turn on the power source. The panel should turn ON.



PAIRING (MANUAL PROGRAMMING)

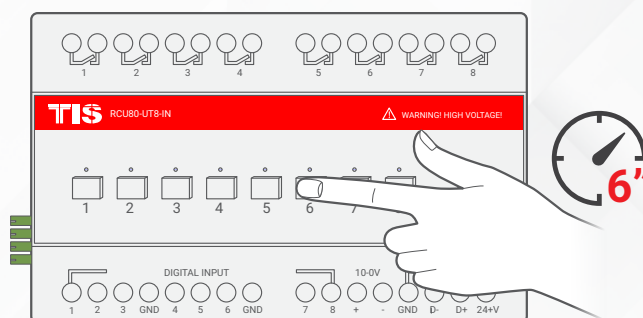


LIGHTS / SHUTTERS PROGRAMMING

You can pair the light channels with any wall panel. To do so, follow these steps:

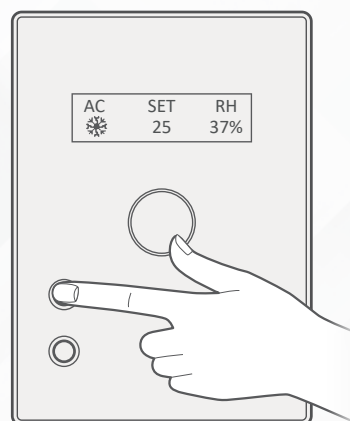
1 »

Press any button on any relay or dimmer module channel for 6 seconds so that the LED indicator light of that button starts blinking.



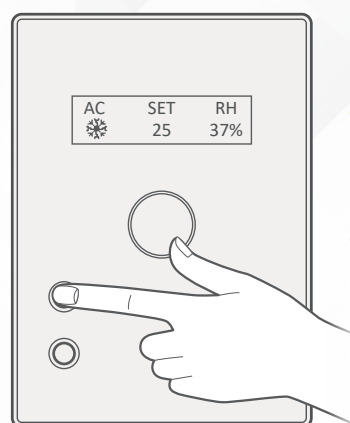
2 »

On the IO Push buttons, shortly press on any push button or press the wall switch that is connected to the dry inputs of the panel addition zones.



3 »

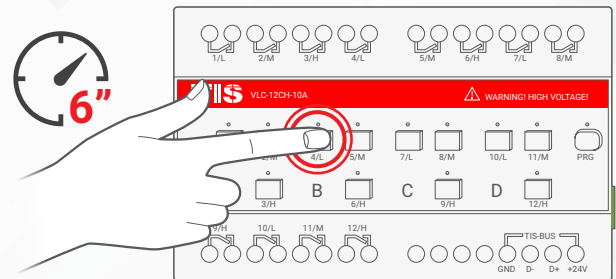
Test the button on the panel by short pressing it for ON/OFF and long pressing it to dim (if channel is dimmable).



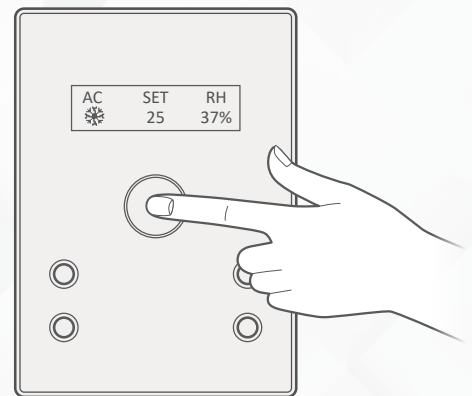
PAIRING (MANUAL PROGRAMMING)

FCU PROGRAMMING

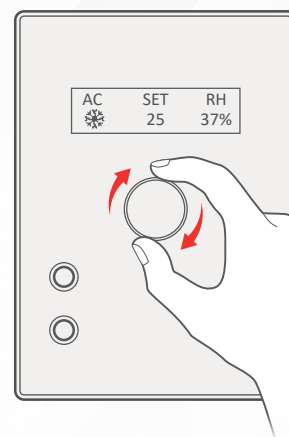
1 To program the FCU to any wall thermostat panel, press and hold the first Channel L (LOW) button for 6 seconds. The LED indicator of the pressed button will start blinking.



2 On the IO AC page, push the IO knob to turn the AC ON.



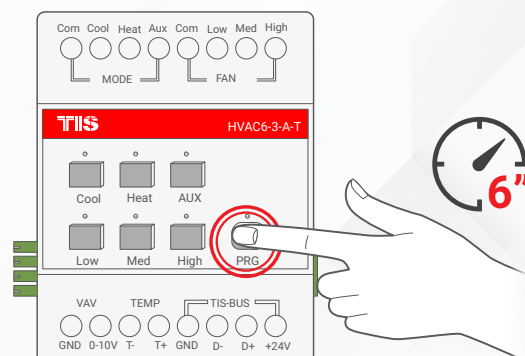
3 Test your air conditioning by changing the fan speed from low to medium to high. Your relay should respond accordingly.



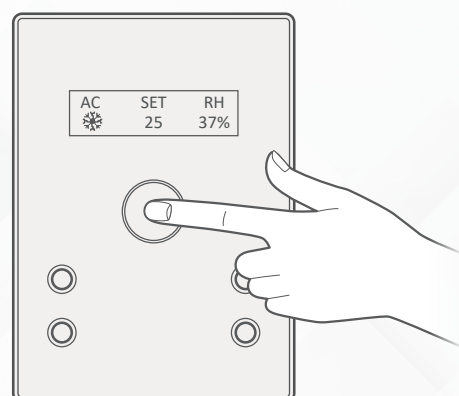
PAIRING (MANUAL PROGRAMMING)

HVAC PROGRAMMING

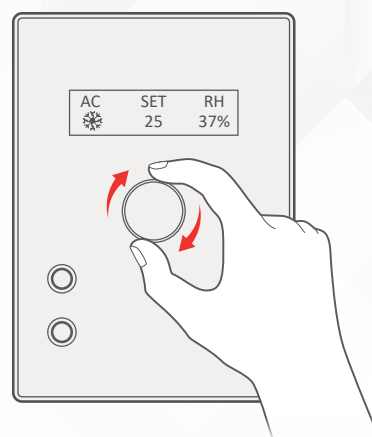
1 Press the PRG button on the HVAC module for 6 seconds until the green LED turns on and is steady.



2 On the IO AC page, push the IO knob to turn the AC ON.



3 Test your air conditioning by changing the mood, heat/cool, and fan speed from low to medium to high. The HVAC module should respond accordingly.





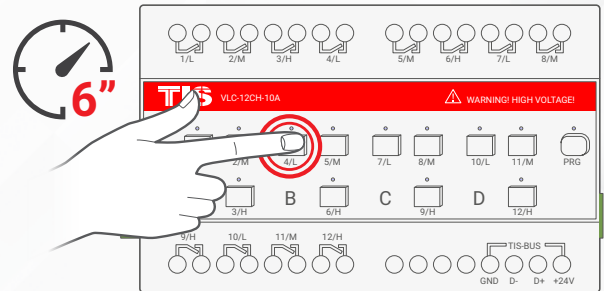
PAIRING (MANUAL PROGRAMMING)



FLOOR HEATING PROGRAMMING

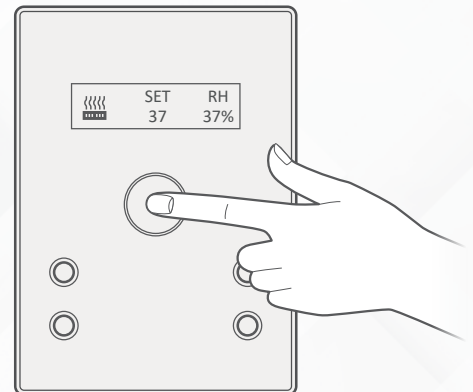
1

Press any button on any relay or dimmer module channel for 6 seconds so that the LED indicator light of that button starts blinking.



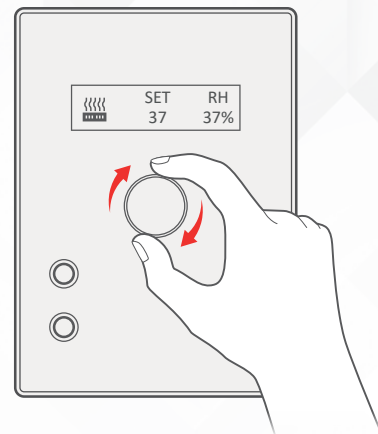
2

On the IO floor heater page, turn the floor heating ON.



3

Test your floor heating by changing the temperature; the relay should respond accordingly.



USER OPERATION



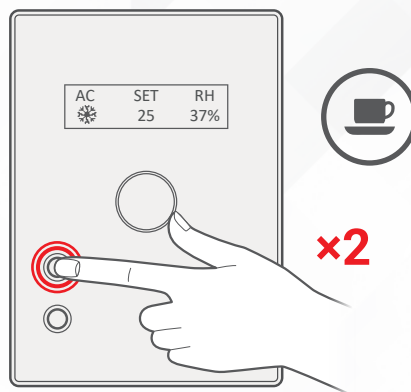
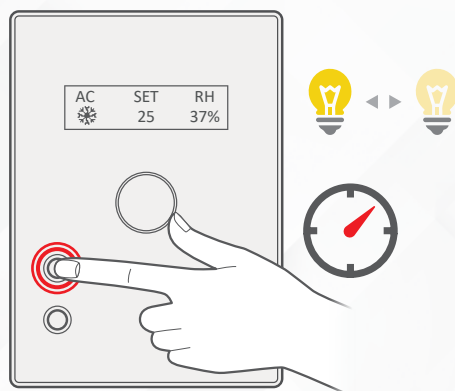
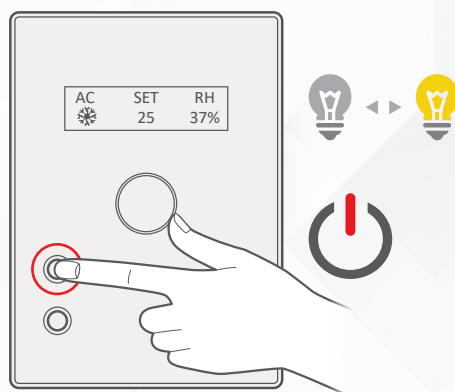
LIGHTS / SHUTTERS / SCENE CONTROL

You can use the 4 push buttons to control lights and other devices. Press on the push buttons as follows:

» Short press for ON/OFF or to run a scene.

» Long press to dim or ramp up the lights

» Double click to trigger a special programmed scene.





USER OPERATION



CLIMATE CONTROL

The following functions are used to control your climate:



Changing AC pages

Press and rotate the knob at the same time

- ▶ You can navigate between the AC control page (AC1-AC2), floor heater, and ceiling fan speeds.



Turning Climate Control ON/OFF

Short press on the rotating knob

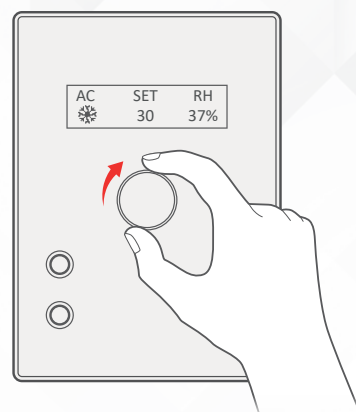
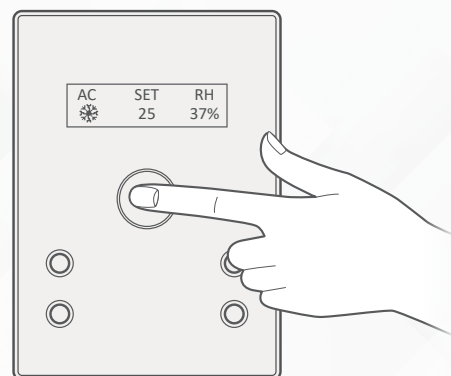
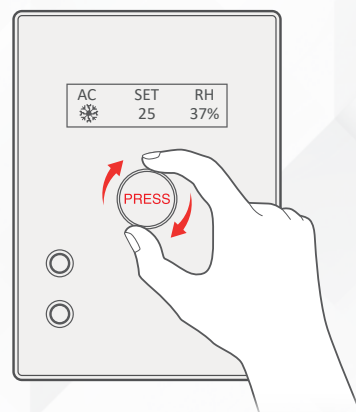
- ▶ Turn your AC, floor heater, or ceiling fan on/off.



Increasing the temperature in AC & floor heating pages

Rotate the knob to the right

- ▶ Increase the set AC or floor heater temperature.





USER OPERATION



CLIMATE CONTROL

The following functions are used to control your climate:



Decreasing the temperature in AC & floor heating page

Rotate the knob to the left.

- ▶ Decrease the set AC or floor heater temperature.



Change fan speed on AC page

Long press on knob for 3 seconds

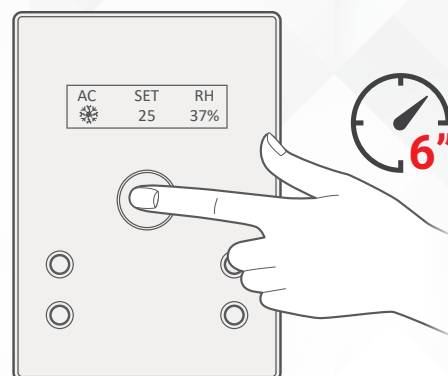
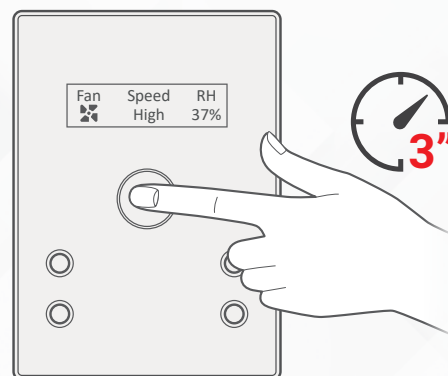
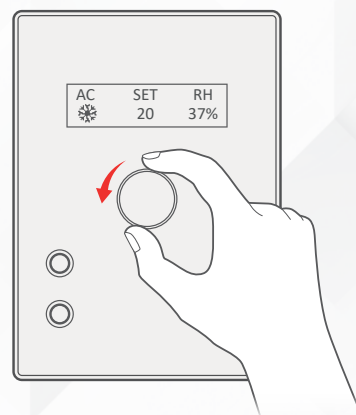
- ▶ Change AC fan speed to low, med, high, or auto.



Changing AC mode

Long press on knob for 6 seconds

- ▶ Change AC mode to cool, heat, fan, or auto.





USER OPERATION



CLIMATE CONTROL

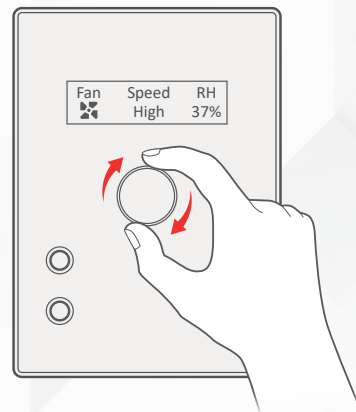
The following functions are used to control your climate:



Changing ceiling fan speed

Rotate the knob to the left or right

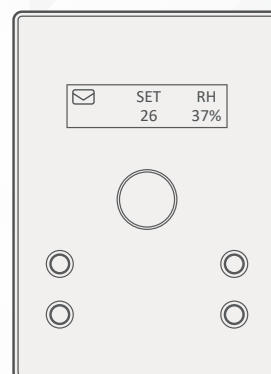
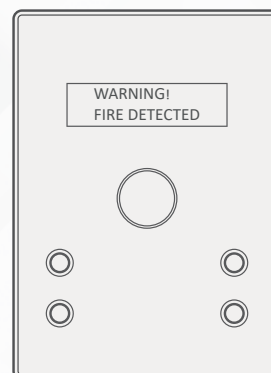
- Decrease the set AC or floor heater temperature.



MESSAGES DISPLAY

The panel can display urgent messages with a buzzer sounding on its OLED Screen.

For normal messages, a message icon will appear in the top left corner of the OLED, and you will need to press on the knob to show the message on the screen.





TROUBLESHOOTING



The panel's LCD blinks rapidly

Reason: The panel address conflicts with another device in the TIS network. You need to press and hold the IR button (IR middle button) for 6 seconds so that the panel can get a new address.



The panel buttons' LEDs do not turn ON, and the device is not powered.

Reason 1: There is no TIS-BUS power or no connection to the L/N input (if used AIR bus-3W converter).

Reason 2: The TIS 24V power supply is not connected to the TIS-BUS.



The wall panels fail to pair with other devices.

Reason 1: The TIS-BUS connection has a problem, or the wire has a short.

Reason 2: The manual programming function is disabled on the device (it is enabled by default).



The wall panels fail to control the device channels.

Reason 1: The TIS-BUS connection has a problem, or the wire has a short.

Reason 2: The programming address is faulty.



The page is asking for a password.

Reason: The page's password lock is enabled. The default password is 1234. You can disable this locking page function in the software. If you've forgotten the password, you can email your Luna MAC number to the tech support team and they will generate an unlock password for your panel.



Music stops and will not play the next track once the current track finishes.

Reason: In the Luna Music Page, the Play Mode setting is set to Play Once. You should change it to Play All.