

INSTALLATION MANUAL

TIS IO CARD SWITCH

Hotel Panel with Card Holder

MODEL: IO-CARD-3SRV

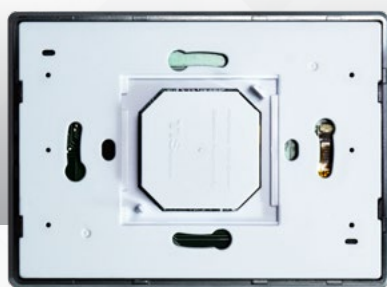


PRODUCT INFORMATION

This product features a wall-mount panel with RF readability and push buttons for room service request designed for maximum convenience and efficiency in hospitality facilities.

PRODUCT SPECIFICATIONS

	Input	RF card reader	Temic RF Type
	Output	Relay	1x relay 1A/220V
	TIS Bus	Number of devices on 1 line Bus voltage Current consumption	Max. 64 12-32 V DC <25 mA / 24 V DC
	Protection		Reverse polarity protection ESD protection
	Operation	Push buttons Card switch TIS bus Upgrading	3x push button with orange / white LEDs RF card reader TIS Protocol messages and commands By Rs485 upgrading kit
	Functions	CARD switch 3 Push buttons	To turn off lights if no occupancy or if card removed For DND, MUR and Laundry request
	Dimensions	Width x Length x Height	129mm x 94mm x 20mm(including card holder)
	Housing	Materials Casing color Internal parts color IP rating	Fireproof PC / acrylic in front Silver plating frame. Glass Black or White Black & White IP 50



BARCODE (UPC-A)





Read Instructions

We recommend that you read this Instruction Manual before installation.



Mounting Location

Install in a dry, indoor area with a suitable temperature and humidity range.



Safety instructions

Electrical equipment should only be installed and fitted by electrically skilled persons.

Failure to follow the instructions may cause damage to the device and other hazards.

These instructions are an integral part of the product and must remain with the end customer.



Data Cable

Use screened stranded RS485 data cable with four twisted pairs. Configure devices in a "Daisy Chain."

Do not cut or terminate live data cables.



Warranty

There is a two-year warranty provided by law. The hologram warranty seal and product serial number are available on each device.



Programming

Advanced programming requires knowledge of the TIS Device Search software and instruction in the TIS advanced training courses.



Simple Installation

You can use 2 screws to install this panel on wall; it fits on most junction box sizes.

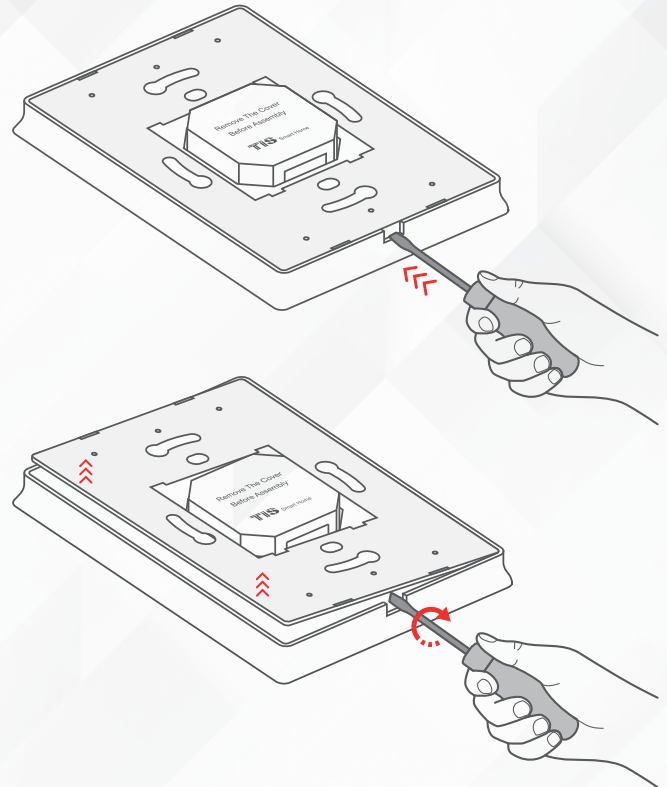




INSTALLATION STEPS

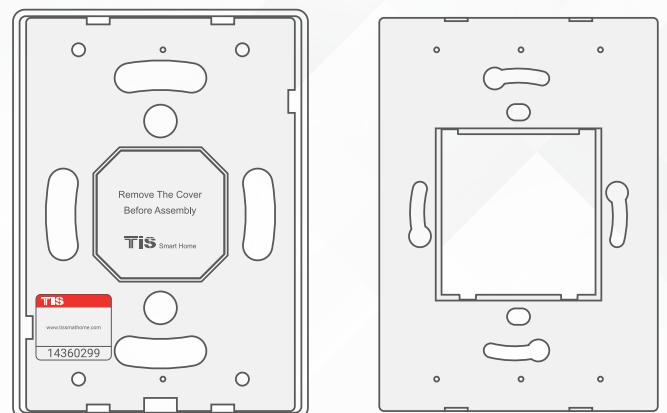
1

Insert a large flathead screwdriver in the hole of the Panel Cover. Rotate the screwdriver 90 degrees.



2

Separate the Main Panel and Wall Base from each other.





INSTALLATION STEPS

3»

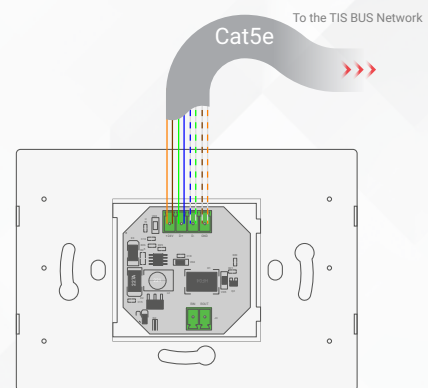
Turn off the main electrical source before installation.



WARNING! HIGH VOLTAGE

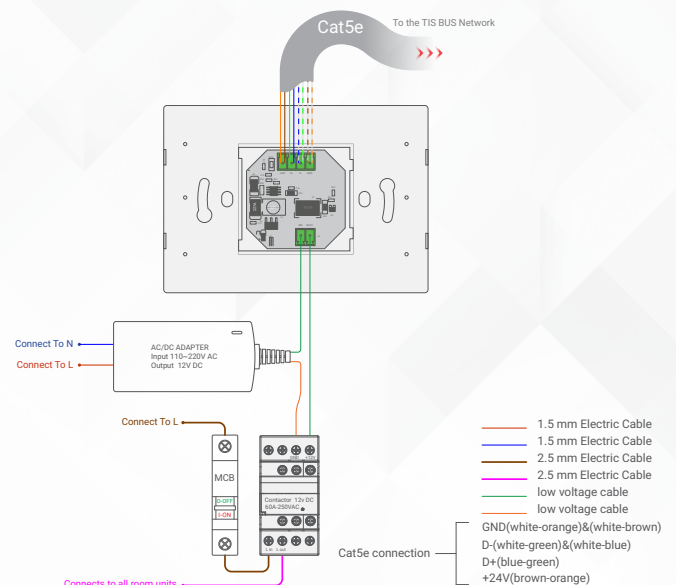
4»

Connect the Cat5e TIS BUS wire to the Panel Addition.



5»

Connect the other connection if needed between wall services switches to the digital inputs of the hotel panel as per the following diagram.

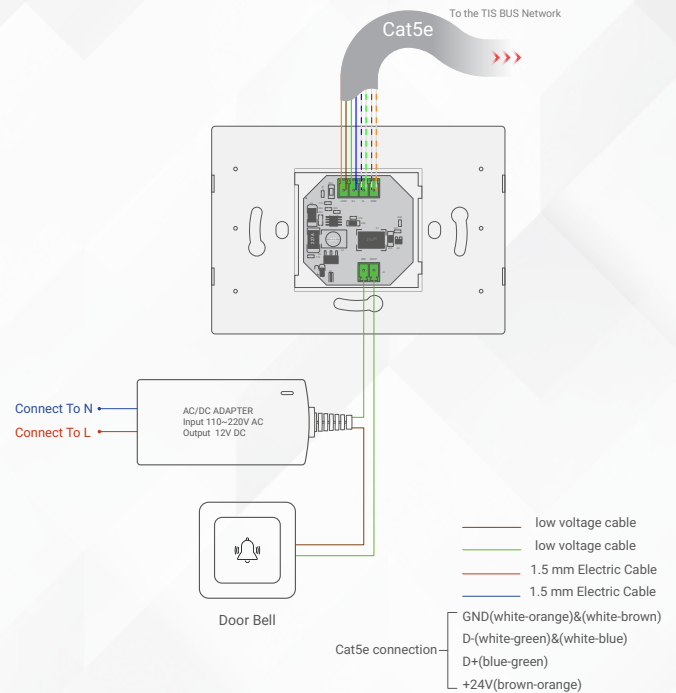




INSTALLATION STEPS

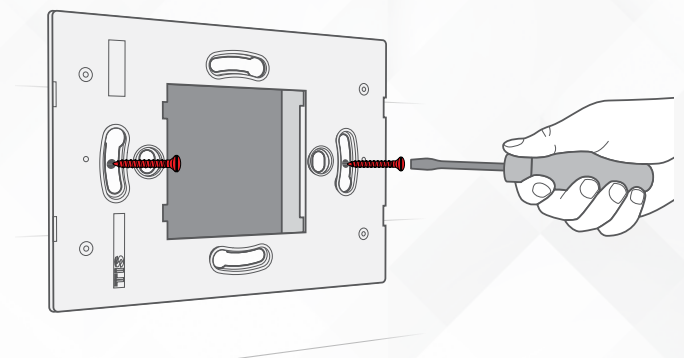
6

Connect the Door Bell to the Relay if it exists in the room.



7

Mount the wall base on the wall using 2 screws on the junction box.

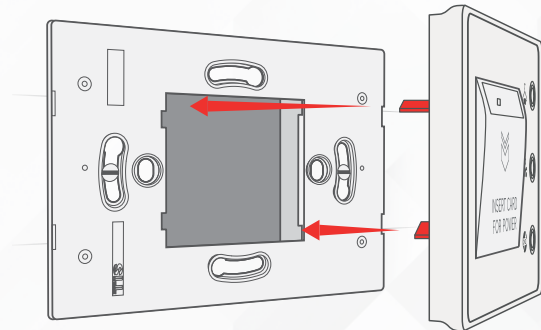




INSTALLATION STEPS

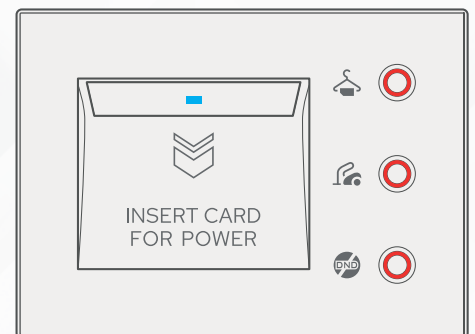
8»

Connect the main Luna panel horizontally to the base installed on the wall; install the upper part by making sure the buckles are completely inside.



9»

Turn on the power source. The panel should turn ON.



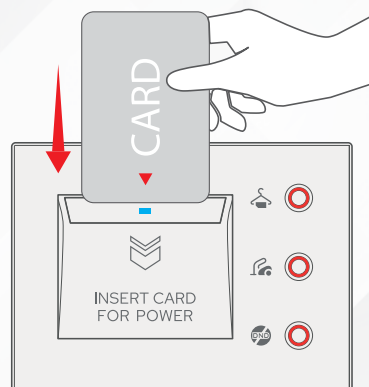


USER MANUAL



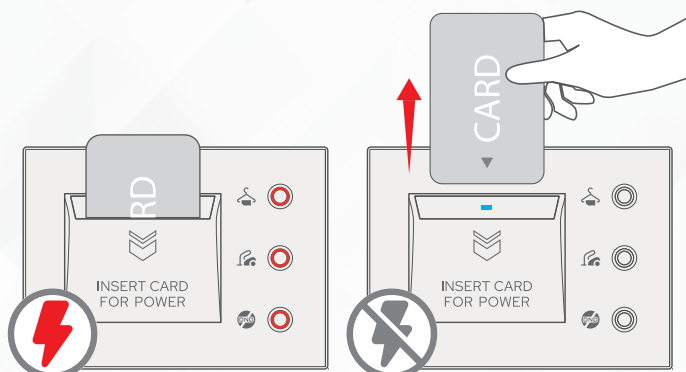
LED INDICATOR

The hotel card Led will light up if no card inserted, and will turn off if the correct card is inserted.



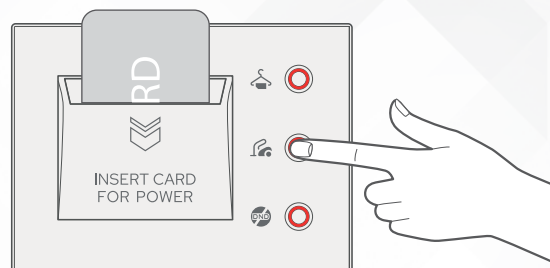
RF CARD POWER SWITCH

You can put your hotel card into this interface's slot to turn on the room's power, and pull it out to trigger the energy saving mode. The 10-seconds delayed power-off design of this switch maintains your comfort.



HOTEL SERVICE BUTTONS

This wall switch also features 3 push buttons for hotel services including "Laundry, Make up Room, and Do not Disturb". Push the related icon once to send out your request. When responded, push the icons to disable them.





TROUBLESHOOTING



The panel buttons' LEDs do not turn ON, and the device is not powered.

Reason: The TIS 24V power supply is not connected to the TIS-BUS.



The wall panels fail to communicate with other devices.

Reason: The TIS-BUS connection has a problem, or the wire has a short.



Card inserted but the panel LED do not turn OFF.

Reason 1: Panel programmed only to accept room card, and the card is not programmed to the same room.

Reason 2: Card's check-in date is expired.