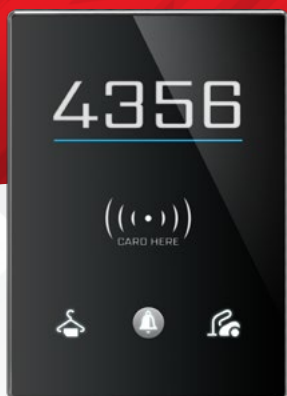


INSTALLATION MANUAL

TIS IO OUTDOOR BELL PANEL

MODEL: IO-OUT-HOTEL, IO-OUT-HOTEL-RF

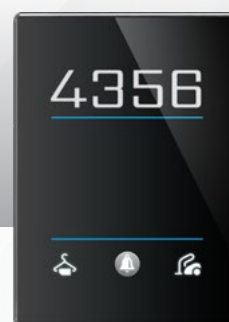
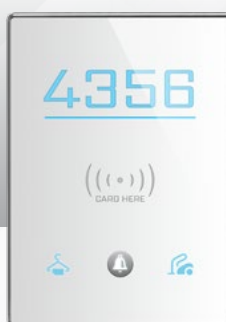


PRODUCT INFORMATION

This product features a bell panel with room number display and touch buttons for room services designed for maximum convenience and efficiency in hospitality facilities.

PRODUCT SPECIFICATIONS

	Input	RF card reader (RF Type) Dry inputs	Temic RF Type 4 Digital Inputs
	Output	Low current relay	1 Relay Output 2A/12V
	TIS Bus	Number of devices on 1 line Bus voltage Current consumption	Max. 64 12-32 V DC <25 mA / 24 V DC
	Protection		Reverse polarity protection ESD protection
	Operation	Push buttons Backlight TIS bus Upgrading	1 Push button with Red / White Indicator... 2 RGB indicators + Room number white LEDs TIS Protocol messages and commands By Rs485 upgrading kit.
	Functions	Bell Press	Push button
	Dimensions	Width x Length x Height	94mmx 13mm x 129mm
	Housing	Materials Casing color Internal parts color IP rating	Fireproof PC / acrylic in front Silver plating frame. Glass black Black & White IP 50



BARCODE (UPC-A)





Read Instructions

We recommend that you read this Instruction Manual before installation.



Mounting Location

Install in a dry, indoor area with a suitable temperature and humidity range.



Safety instructions

Electrical equipment should only be installed and fitted by electrically skilled persons.

Failure to follow the instructions may cause damage to the device and other hazards.

These instructions are an integral part of the product and must remain with the end customer.



Data Cable

Use screened stranded RS485 data cable with four twisted pairs. Configure devices in a "Daisy Chain."

Do not cut or terminate live data cables.



Programming

Advanced programming requires knowledge of the TIS Device Search software and instruction in the TIS advanced training courses.



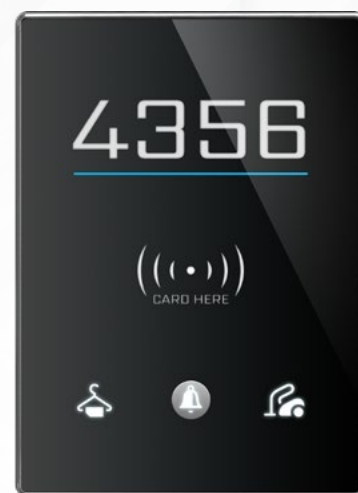
Warranty

There is a two-year warranty provided by law. The hologram warranty seal and product serial number are available on each device.



Simple Installation

You can use 2 screws to install this panel on wall; it fits on most junction box sizes.

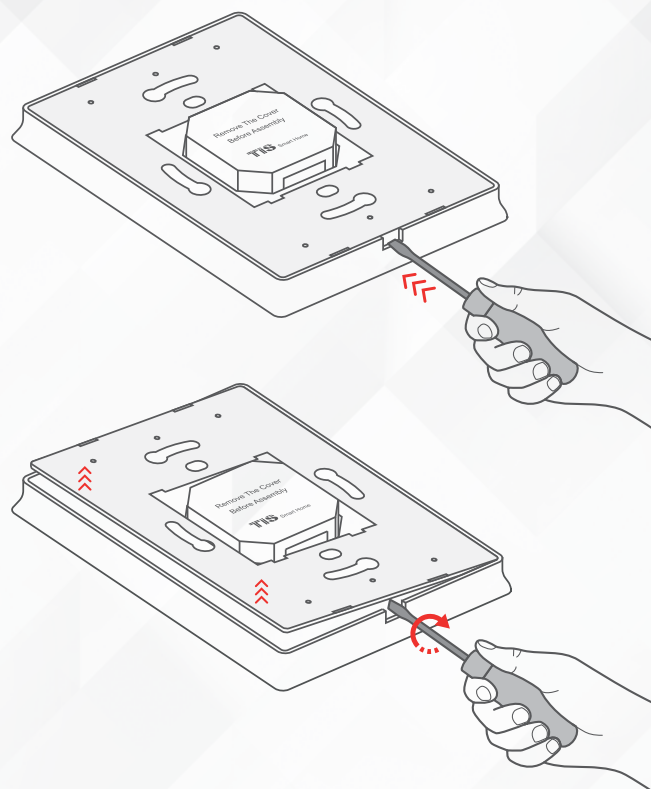




INSTALLATION STEPS

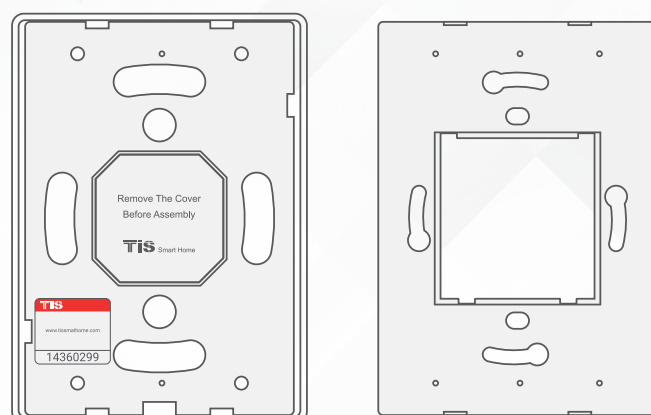
1

Insert a large flathead screwdriver in the hole of the Panel Cover. Rotate the screwdriver 90 degrees.



2

Separate the Main Panel and Wall Base from each other.





INSTALLATION STEPS

3»

Turn off the main electrical source before installation.

4»

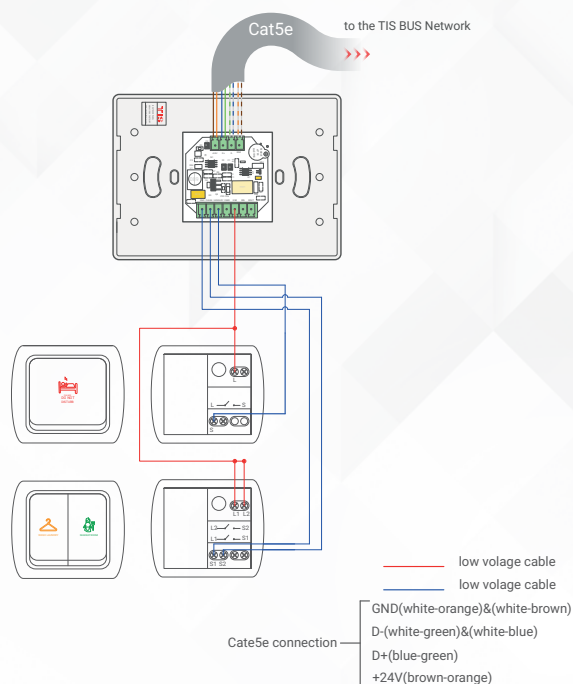
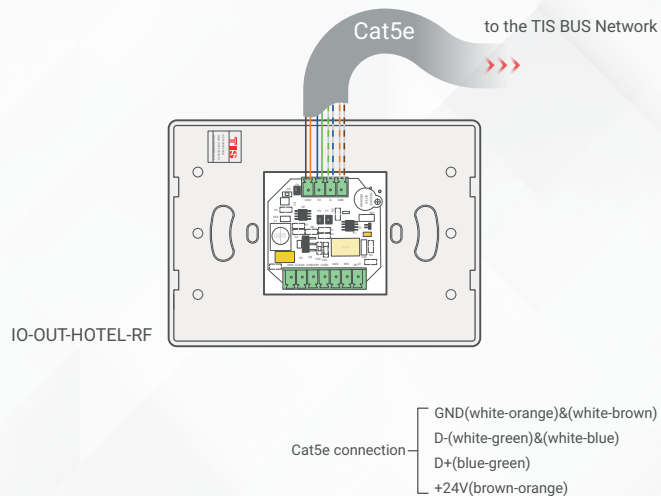
Connect the Cat5e TIS BUS wire to the Panel.

5»

Connect the other connection if needed between wall services switches to the digital inputs of the hotel panel as per the following diagram.



WARNING! HIGH VOLTAGE

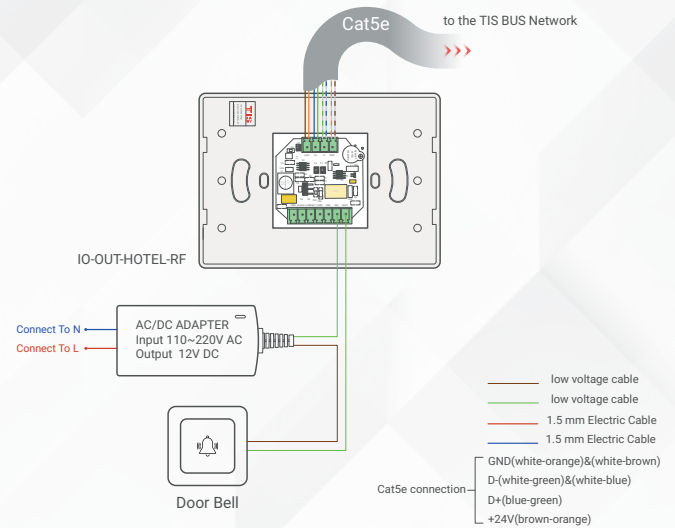




INSTALLATION STEPS

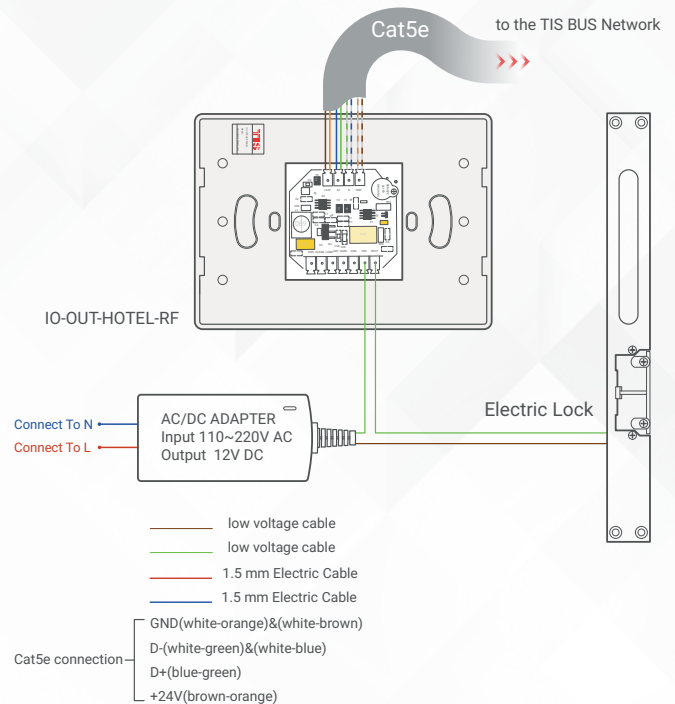
6

Connect the Door Bell to the Relay if it exists in the room.



7

If you want to connect electrical lock to the RF Hotel panel type please connect it as per this diagram.

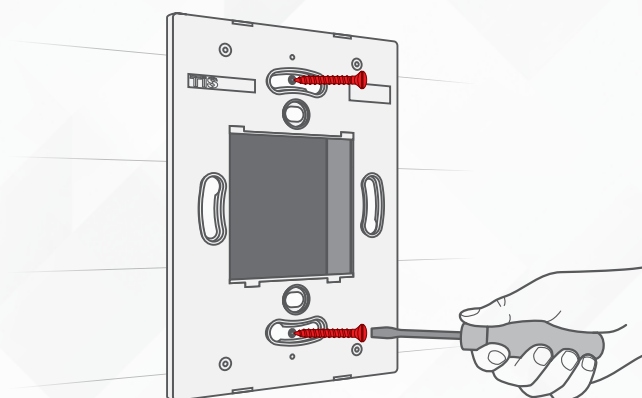
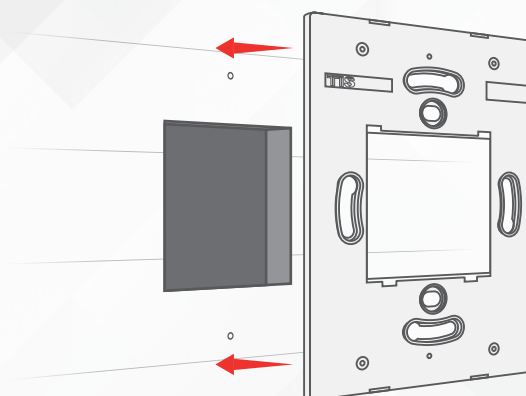




INSTALLATION STEPS

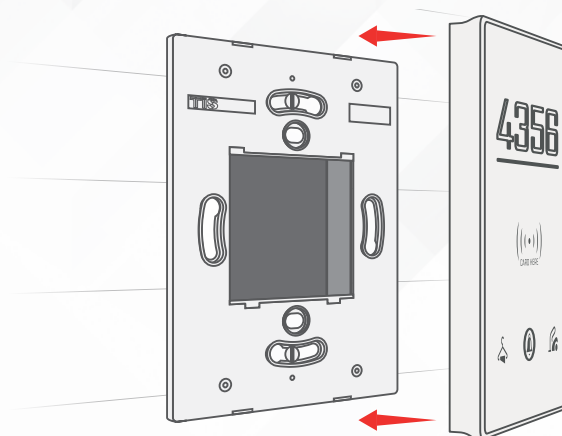
8»

Mount the wall base on the wall using 2 screws on the junction box.



9»

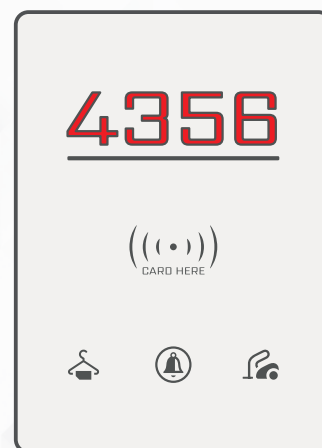
Connect the main IO panel vertically to the part installed on the wall; install the upper part by making sure the buckles are completely inside.



- 10»** Apply pressure to the bottom part of the panel to fix it to the wall base and complete the assembly.



- 11»** Turn on the power source. The panel should turn ON.



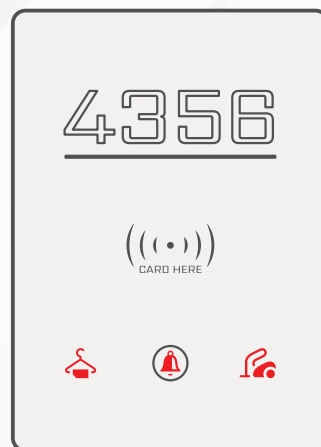
USER OPERATIONS

SERVICE INDICATION & BELL PRESS




This panel features 3 hotel service indicators including Laundry, Make Up Room, & Do Not Disturb (DND).

Once a service is selected by a guest using the indoor unit, the LED backlit icon of the requested service turns ON on the outside panel.

Please note that the LED backlit color is customizable via the TIS Software



The bell button backlit colors indicate the following:

BACKLIT COLOR		INDICATION
White		Room is occupied & DND is OFF. You can press the bell, and it will ring inside the room if the bell is connected.
Red		DND mode is ON & bell function is disabled.
OFF (No backlight)		Room is vacant. Room service is provided first thing in the morning.

RF ACCESS CONTROL

If you are using the panel with RF access control function, hold the card near the reader position on the panel to open doors.





TROUBLESHOOTING



The panel buttons' LEDs do not turn ON, and the device is not powered

Reason: The TIS 24V power supply is not connected to the TIS-BUS.



The wall panels fail to communicate with other devices

Reason: The TIS-BUS connection has a problem, or the wire has a short.



Service LED is not turning ON/OFF

Reason 1: When programming, you did not set the right message or address.

Reason 2: ON status color is set to black in the software.