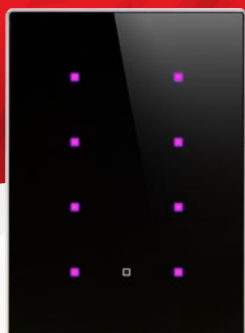


# INSTALLATION MANUAL

## TIS LUNA 9G PANEL

### 9-Gang Touch Panel

MODEL: LUNA-9GANGS

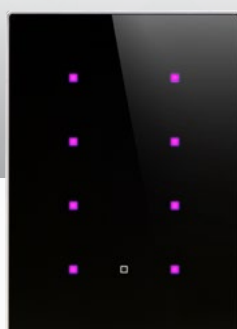
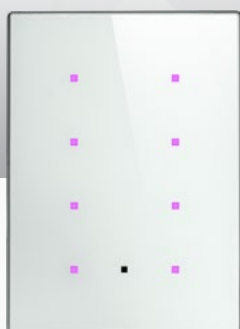


## PRODUCT INFORMATION

This product is a BUS-operated wall panel with touch buttons for smart control over lights, curtains, and preset scenarios. It comes in black and white and customizable RGB lights for maximum aesthetics.

### PRODUCT SPECIFICATIONS

	<b>Touch</b>	Active area Touch type	4.3" Capacitive
	<b>Input</b>	IR receiver Using panel addition	IR receiver Using panel addition
	<b>Output</b>	Using panel addition 3R Using panel addition 3DL-12V Using panel addition 2DL-IRE	3 Relay output 3A/5A 12V DC 50mA output IR emitter
	<b>TIS Bus</b>	Number of devices on 1 line Bus voltage Current consumption	Max. 64 12-32 V DC <45 mA / 24 V DC
	<b>Operation</b>	touch buttons Backlight TIS bus Upgrading	9 touch buttons ... 8 RGB indicators TIS protocol messages and commands By Rs485 upgrading kit.
	<b>Functions</b>	1 Press Long press Double click IR receiver	ON/OFF/Scene Dim or ramp the lights Extra scene Music, scene, lights control
	<b>Dimensions</b>	Width x length x height	94mm x 129mm x 13mm
	<b>Housing</b>	Materials Casing color Internal parts color IP rating	Fireproof PC / Glass in front Silver plating frame. Glass white / black Black & white IP 50



BARCODE (UPC-A)





### Read Instructions

We recommend that you read this Instruction Manual before installation.



### Data Cable

Use screened stranded RS485 data cable with four twisted pairs. Configure devices in a "Daisy Chain."

**Do not cut or terminate live data cables.**



### Safety instructions

Electrical equipment should only be installed and fitted by electrically skilled persons.

Failure to follow the instructions may cause damage to the device and other hazards.

These instructions are an integral part of the product and must remain with the end customer.



### Electrical Wires

The recommended wire size for light channels is 1.5mm - 2.5mm for loads, if you are using the Panel Addition 3R type. The installer should consider the total current consumption when selecting the wires.



### Programming

This device can be tested and programmed manually. Advanced programming requires knowledge of the TIS Device Search software and instruction in the TIS advanced training courses.



### Warranty

There is a two-year warranty provided by law. The hologram warranty seal and product serial number are available on each device.



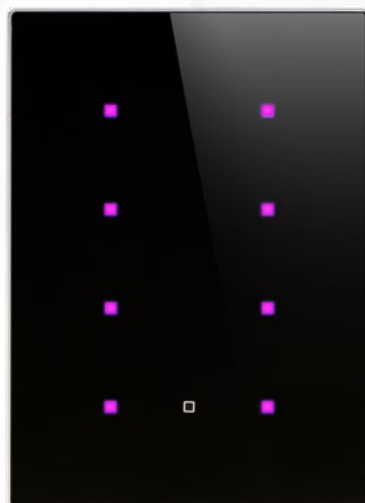
### Simple Installation

You can use 2 screws to install this panel on wall; it fits on most junction box sizes.



### Mounting Location

Install in a dry, indoor area. with a suitable temperature and humidity range.

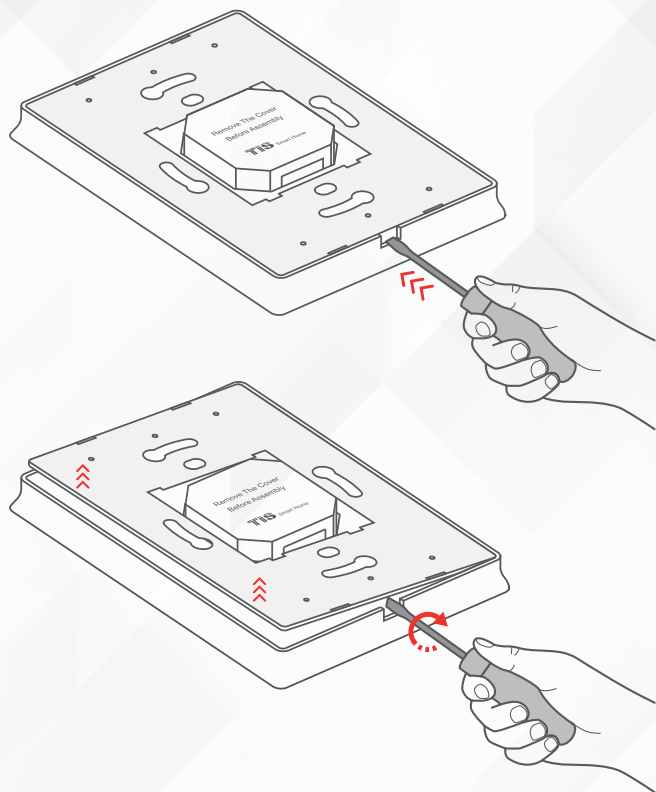




## INSTALLATION STEPS

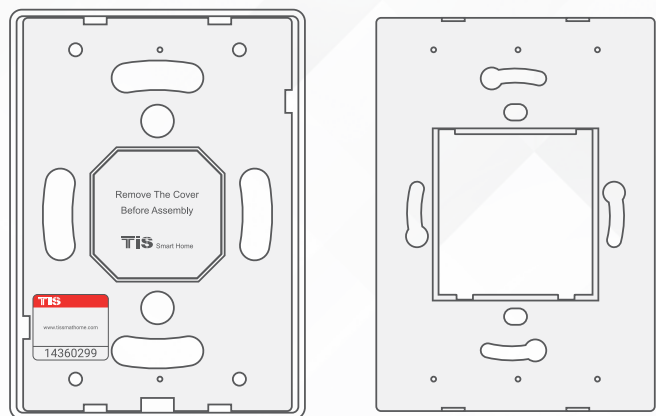
1

Insert a large flathead screwdriver in the hole of the Panel Cover. Rotate the screwdriver 90 degrees.



2

Separate the Cover, Main Panel, and Wall Base from each other.

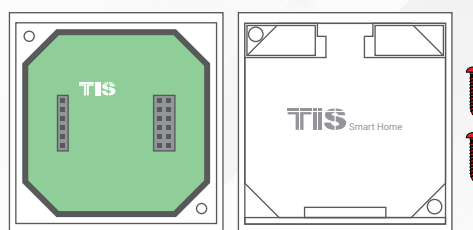
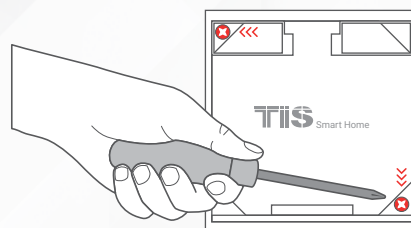




## INSTALLATION STEPS

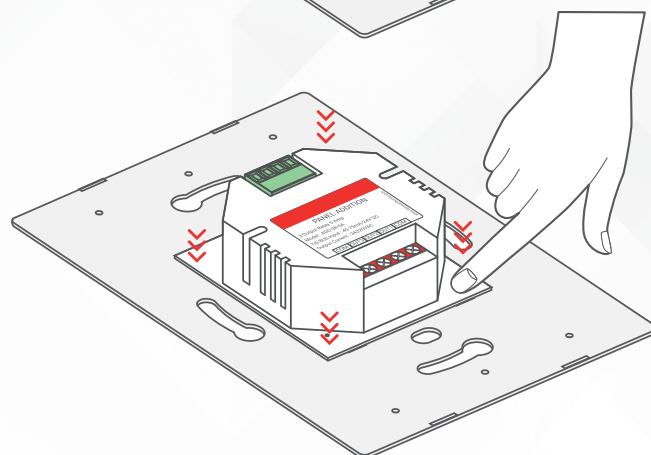
3

Remove the 2 screws on the Panel Addition cover.



4

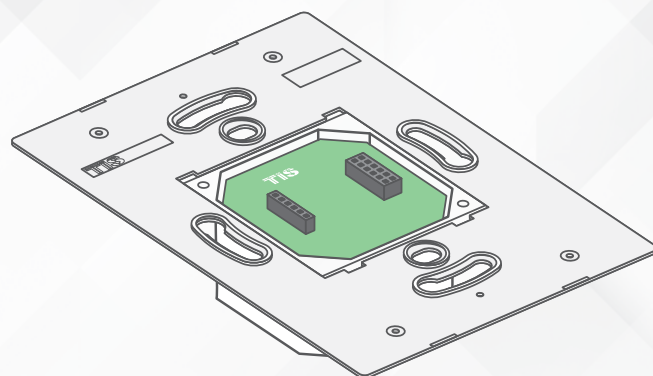
Connect the Wall Base and Panel Addition in this position. Place the upper pins as shown, and then push the down pins down with your fingers to assemble.





## INSTALLATION STEPS

It should look like this following the correct assembly.



5»

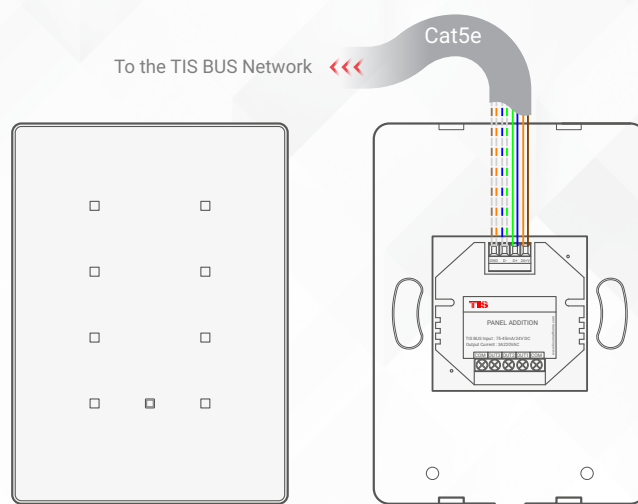
Turn off the main electrical source before installation.



**WARNING! HIGH VOLTAGE**

6»

Connect the Cat5e TIS BUS wire to the Panel Addition.







## INSTALLATION STEPS



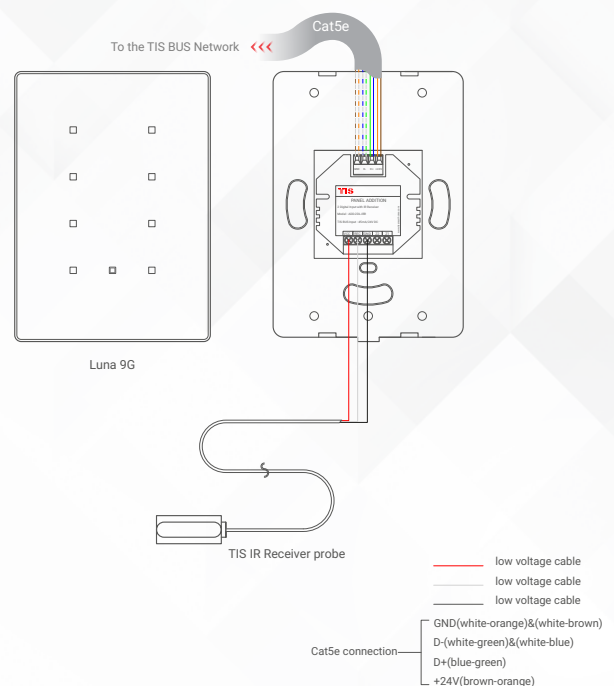
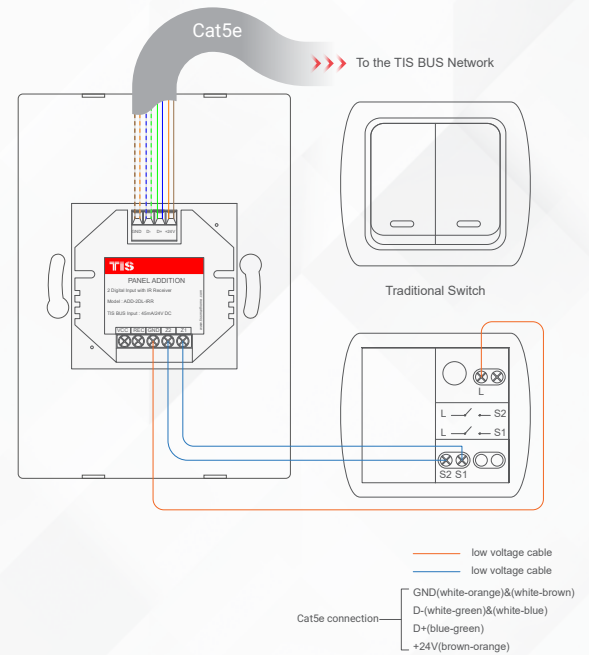
Connect the other connection if needed as per the panel addition type.

### » FOR PANEL ADDITION 2DL-IRR

You can connect 2 digital inputs to any switch or window magnet.

» You can add an External Infrared Receiver to the IRR Port, connect as follows:

- ▶ the IR Receiver black wire to GND
- ▶ Gray wire to REC
- ▶ Red wire to VCC Terminal.



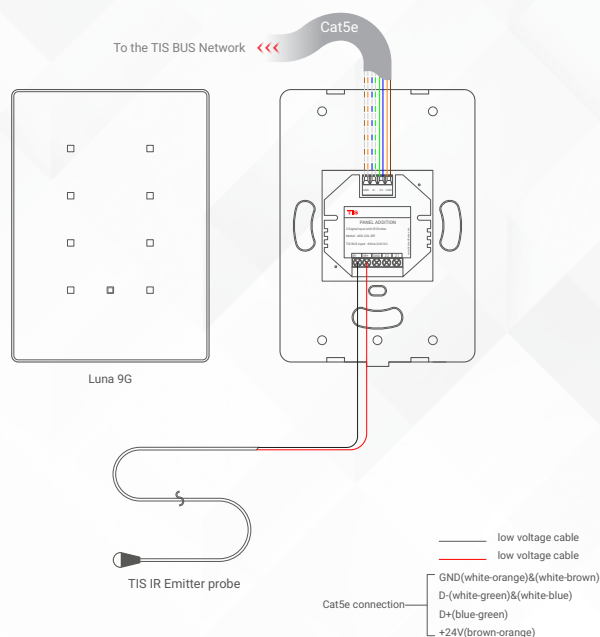
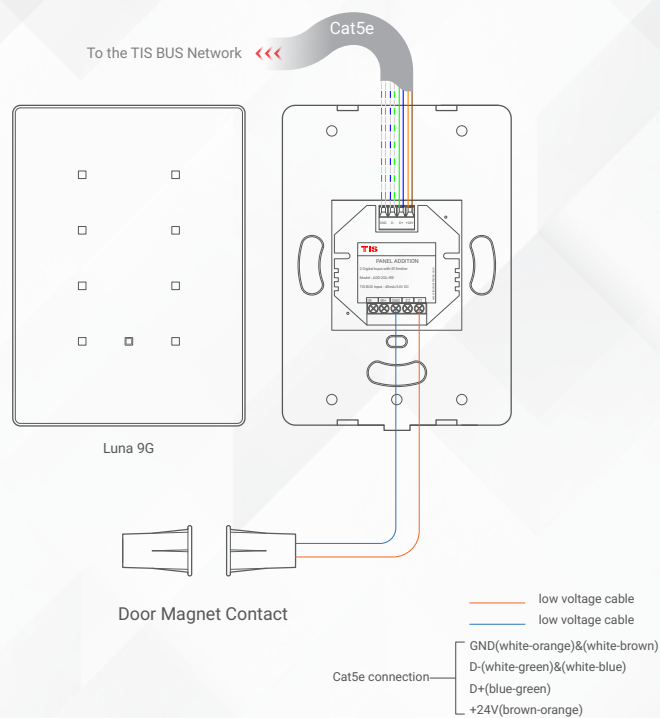


## INSTALLATION STEPS

### » FOR PANEL ADDITION 2DL-IRE

You can connect 2 digital inputs to any switch or window magnet.

- ▶ Connect the IR Emitter Probe's positive wire to IR+ terminal.
- ▶ Connect the negative wire to IR-terminal.



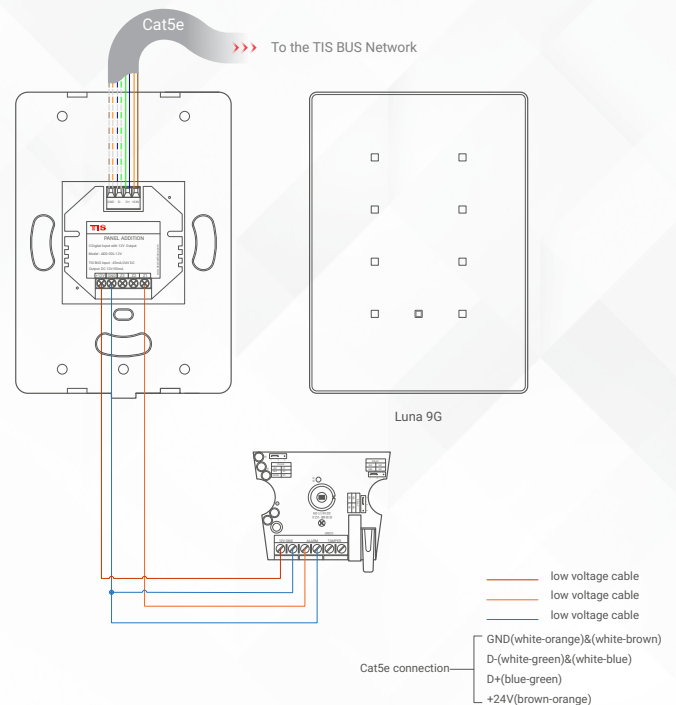
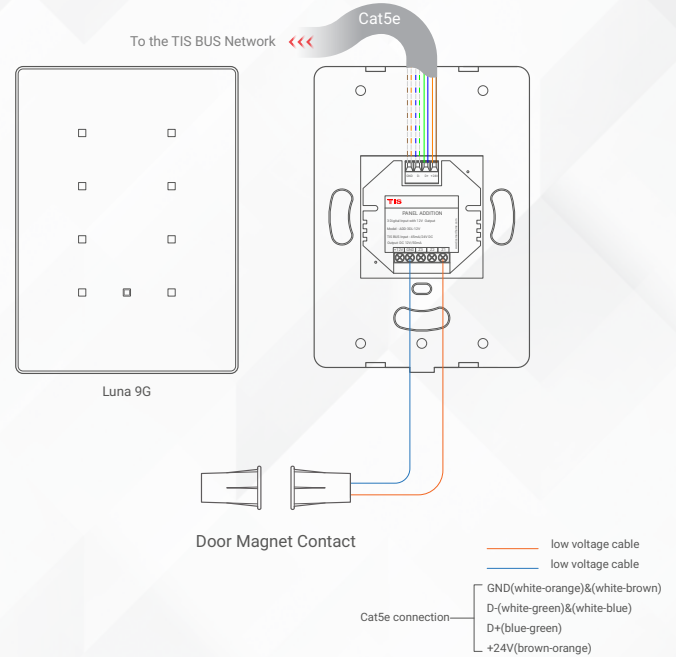


## INSTALLATION STEPS

### » FOR PANEL ADDITION 3DL-12V

You can connect 3 digital inputs to any switch or window magnet.

» Also, you can connect any 12V operated smoke detector or any 3<sup>rd</sup> party sensor with NC/NO connection to the 12V GND and Z1-Z3 terminals as per the diagram.







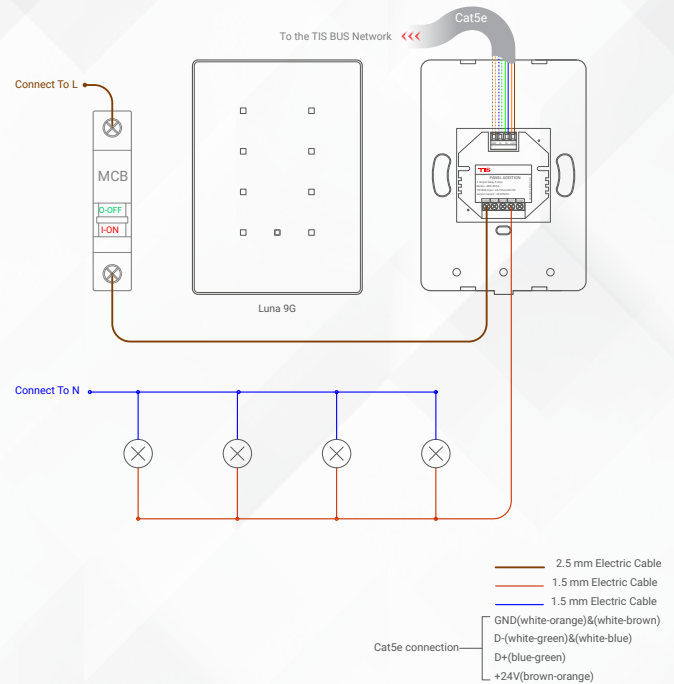
## INSTALLATION STEPS

### » FOR PANEL ADDITION 3R-5A



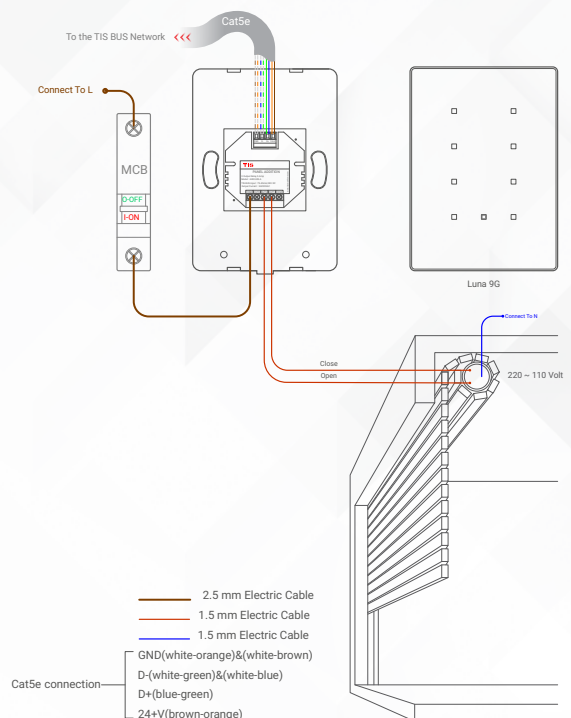
#### LIGHTING CONNECTION

- ▶ Connect the live wire to COM
- ▶ Connect the loads wire to Out1-Out3 to terminals
- ▶ Connect load neutral wire to main neutral in the distributor box.



#### SHUTTER / CURTAIN CONNECTION

- ▶ Connect the Supply wire to COM
- ▶ Connect the Open wire to OUT1
- ▶ Connect the Close wire to OUT2
- ▶ Shutter neutral connection, if it exists, can be looped to main neutral in the distributor box.



**WARNING:** Set the curtain function in the software before connecting the wires.



## INSTALLATION STEPS

### » FOR PANEL ADDITION 3R-5A

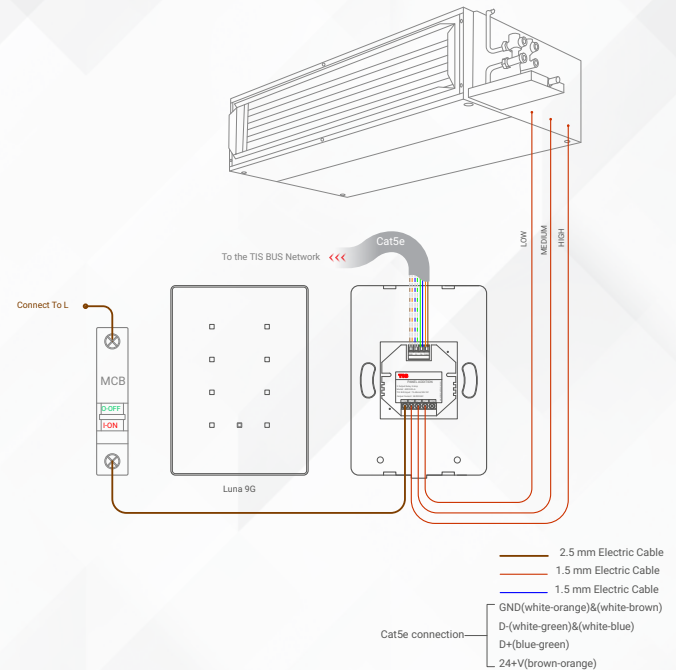


#### FCU CONNECTION

- ▶ Connect the supply wire to com
- ▶ Connect the FAN Low, Medium, and High wires to Out1, Out2, and Out3 in the same order.



**WARNING:** Set the FCU function in the software before connecting the wires.

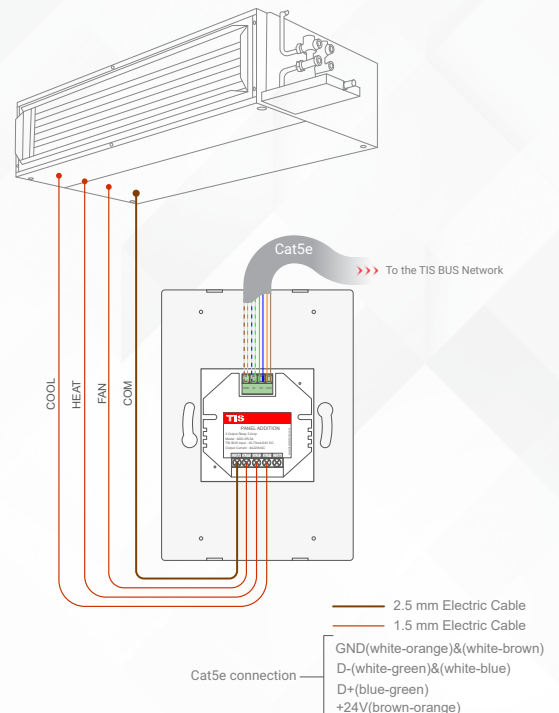


#### HVAC CONNECTION

- ▶ Connect the HVAC COM (supply) wire to COM
- ▶ Connect the Cool, Heat, and FAN wires to Out1, Out2, and Out3 in the same order.



**WARNING:** Set the HVAC function in the software before connecting the wires.



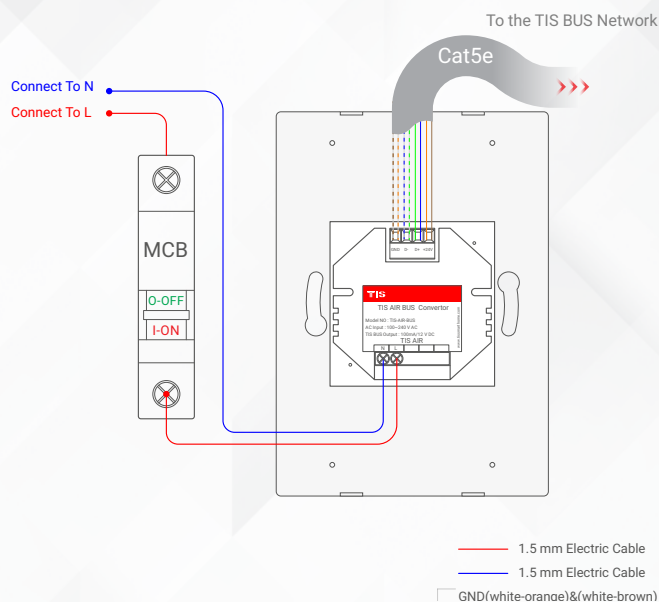


## INSTALLATION STEPS

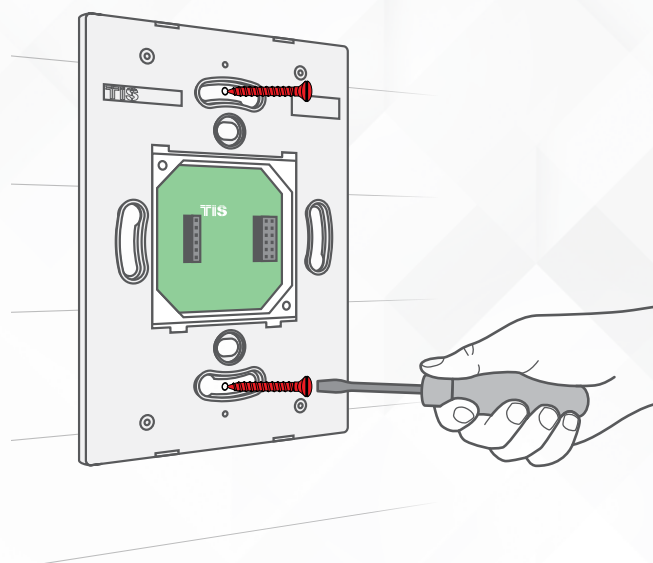


### FOR PANEL ADDITION AIR-BUS-3W

- ▶ Connect the live wire to the L terminal,
- ▶ Connect the neutral wire to N terminal.



- Mount the device on the wall using 2 screws on the junction box.

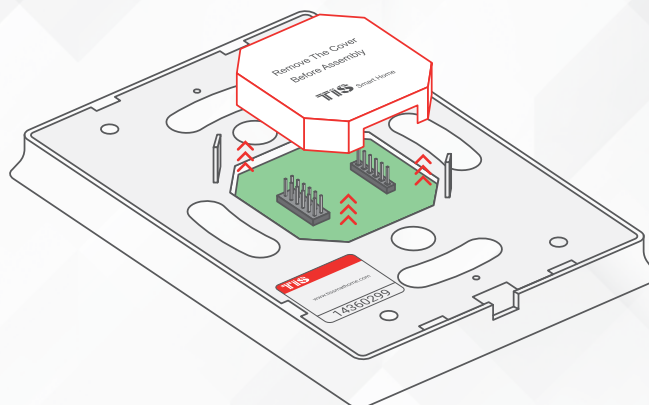




## INSTALLATION STEPS

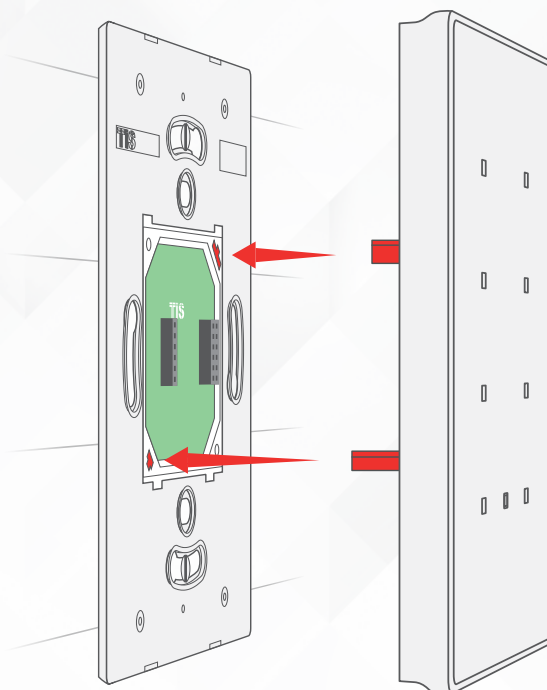
9»

Using your fingers, pull the protective plastic cover vertically, remove it, and throw it away.



10»

Connect the main Luna panel vertically to the part installed on the wall; install the upper part by making sure the buckles are completely inside.

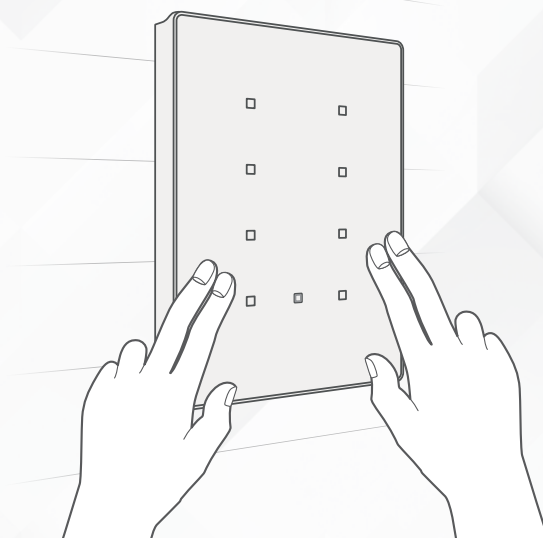




## INSTALLATION STEPS

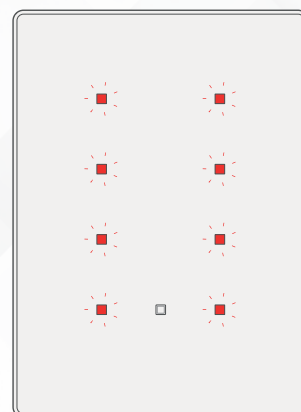
**11** »

Push on the bottom part of the main panel to fix it to the wall and complete the assembly.



**12** »

Turn on the power source. The panel should turn ON.





## PAIRING (MANUAL PROGRAMMING)

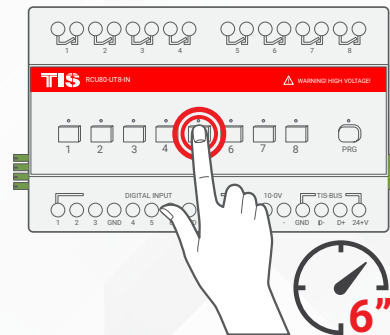


### LIGHTS / SHUTTERS PROGRAMMING

You can pair the light channels with any wall panel. To do so, follow these steps:

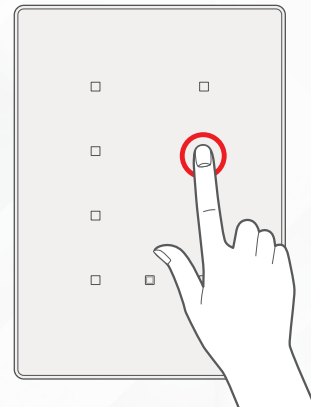
**1** »

Press any button on any channel of a relay or dimmer module for 6 seconds so that the LED indicator light of that button starts blinking.



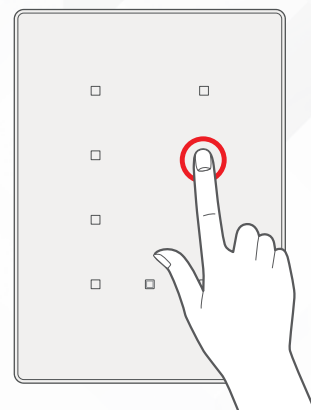
**2** »

Shortly press on any button on wall panel or press the wall switch that connected to dry inputs of the panel addition zones.



**3** »

Test the button on the panel by short pressing it for ON/OFF and long pressing it to dim (if channel is dimmable).







## PAIRING (MANUAL PROGRAMMING)

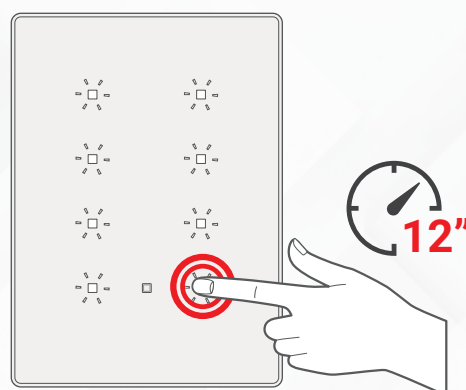
### SCENARIO PROGRAMMING


The last row of the panel buttons (buttons 7, 8, and 9) can be programmed as a mood (scene) that can save the other 6 buttons' statuses.

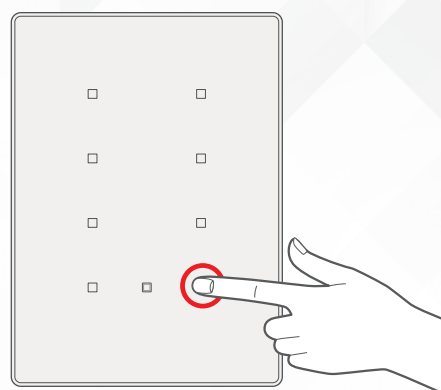
- 1  Set the first 6 buttons for lights ON/OFF, dim brightness level, shutter status, etc., as per your preferred mode (scene).



- 2  Long press buttons 7, 8, or 9 for 12 seconds until all buttons' white LED lights blink.



- 3  The scene is programmed on the pressed button; you can test it with a single press.





## USER MANUAL



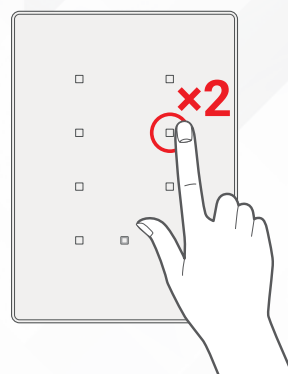
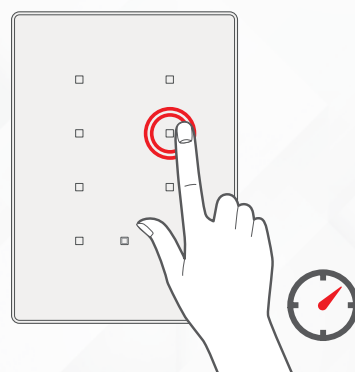
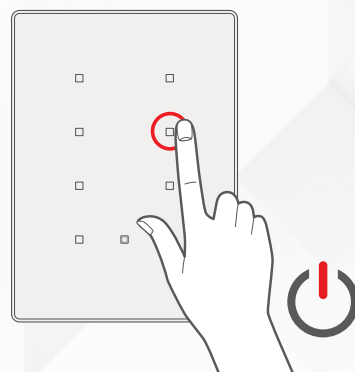
### USING THE PANEL

You can use the panel buttons 1-9; press on any button to get the settings that you programmed:

- ▶ Short press for ON/OFF or to run a scene.

- ▶ Long press to dim or ramp up the lights.

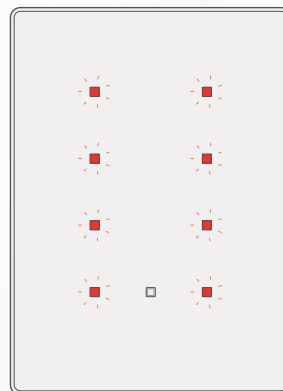
- ▶ Double click to trigger a special programmed scene.





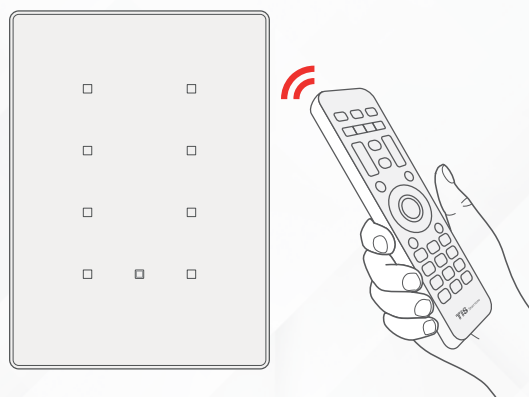
## USER MANUAL

- » All panel LEDs' RGB can be programmed to different colors in ON/OFF status.



## TIS-MRC REMOTE CONTROL

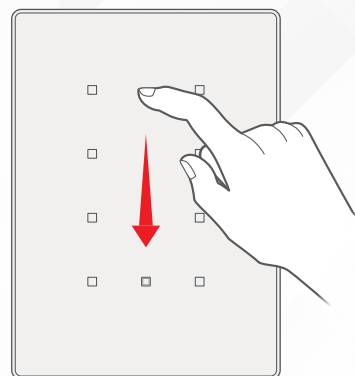
You can use TIS's IR Remote Control to run programmed buttons 1-9. You can also set the music audio player address on the Mars and play music using the Remote Control.



## LOCKING / UNLOCKING THE PANEL

If this function is enabled in the software, you can lock the panel by swiping the middle part of the panel up to down. Two buttons will flash to show that the button has been successfully locked.

You can do the same to unlock the panel if it was locked.





## TROUBLESHOOTING



**The panel's white LED blinks rapidly**

**Reason:** The panel address conflicts with another device in the TIS network. You need to press and hold the 9<sup>th</sup> button (IR middle button) for 6 seconds so that the panel can get a new address.



**The panel buttons' LEDs do not turn ON, and the device is not powered**

**Reason 1:** There is no TIS-BUS power or no connection to the L/N input (if used AIR bus-3W converter).

**Reason 2:** The TIS 24V power supply is not connected to the TIS-BUS.



**The wall panels fail to pair with other devices**

**Reason 1:** The TIS-BUS connection has a problem, or the wire has a short.

**Reason 2:** The manual programming function is disabled on the device (it is enabled by default).



**The wall panels fail to control the device channels.**

**Reason 1:** The TIS-BUS connection has a problem, or the wire has a short.

**Reason 2:** The programming address is faulty.

**Reason 3:** The panel is locked. You need to unlock it by swiping from up to down in the middle of the panel.