

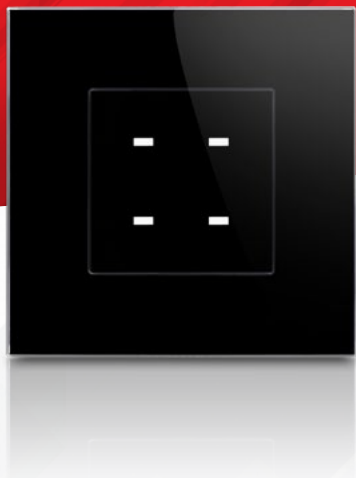
INSTALLATION MANUAL

TIS TERRE PANEL

4G Touch Switch

Model: TER-4G

TIS
CONTROL EVERYTHING

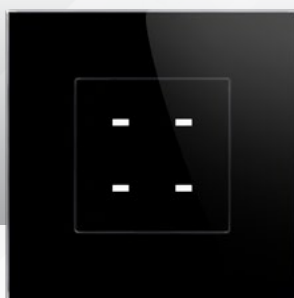


PRODUCT INFORMATION

This product is a wall switch with touch buttons designed for lights and motorized curtains control. It offers customizable backlit color and frame covers for an easy combination with interior schemes.

PRODUCT SPECIFICATIONS

	Touch	Active area	1.5"
		Touch type	Capacitive
	Input	Temp sensor	Resistive temp sensor
	TIS Bus	Number of devices on 1 line	Max. 64
		Bus voltage	12-32 V DC
		Current consumption	<20 mA / 24 V DC
	Protection		Reverse polarity protection ESD protection
	Operation	Touch buttons	4 control buttons
		Backlit	LED indicators
		TIS bus	TIS protocol messages and commands
		Upgrading	By Rs485 upgrading kit
	Dimensions	Width × length × height	25mm × 45mm × 45mm
	Housing	Materials	Fireproof PC / Glass in front
		Internal Parts color	Black & gray
		IP rating	IP 50



BARCODE (UPC-A)





Read Instructions

We recommend that you read this Instruction Manual before installation.



Data Cable

Use screened stranded RS485 data cable with four twisted pairs. Configure devices in a "Daisy Chain."

Do not cut or terminate live data cables.



Safety instructions

Electrical equipment should only be installed and fitted by electrically skilled persons.

Failure to follow the instructions may cause damage to the device and other hazards.

These instructions are an integral part of the product and must remain with the end customer.



Electrical Wires

The recommended wire size for light channels is 1.5mm - 2.5mm for loads, if you are using the Panel Addition 3R type. The installer should consider the total current consumption when selecting the wires.



Programming

This device can be tested and programmed manually. Advanced programming requires knowledge of the TIS Device Search software and instruction in the TIS advanced training courses.



Warranty

There is a two-year warranty provided by law. The hologram warranty seal and product serial number are available on each device.



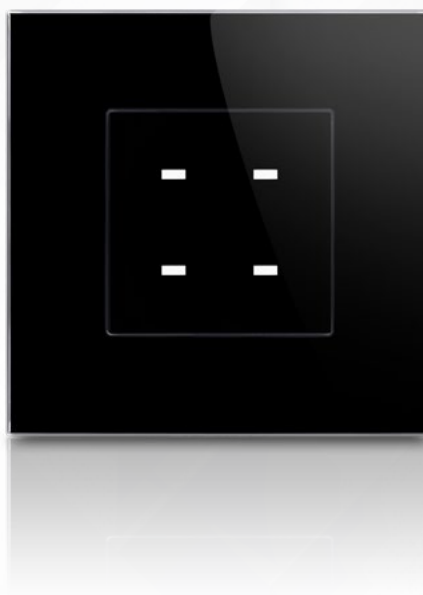
Simple Installation

You can use 2 screws to install this panel on the wall; it fits European round and UK square junction box sizes.



Mounting Location

Install in a dry, indoor area with a suitable temperature and humidity range.



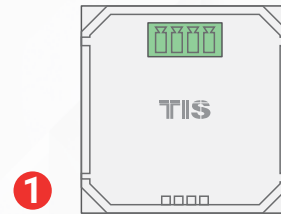


INSTALLATION STEPS

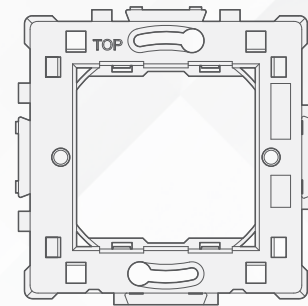


The TIS Terre wall switch consists of three main components for installation; a base module unit (fig. 1), a wall base (fig . 2), and a top interface cover (fig. 3).

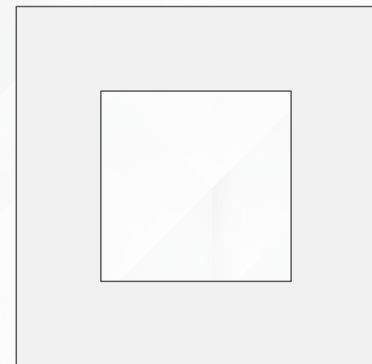
The top cover comes in a variety of materials, colors, and a customized combination of 1-4 gangs.



1



2



3



Turn off TIS power supply.



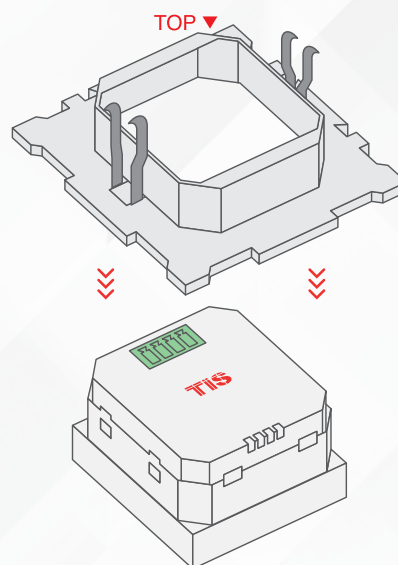
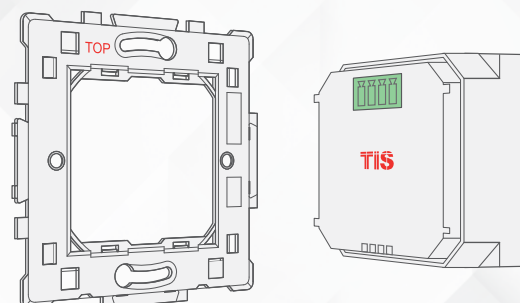
WARNING! HIGH VOLTAGE



INSTALLATION STEPS

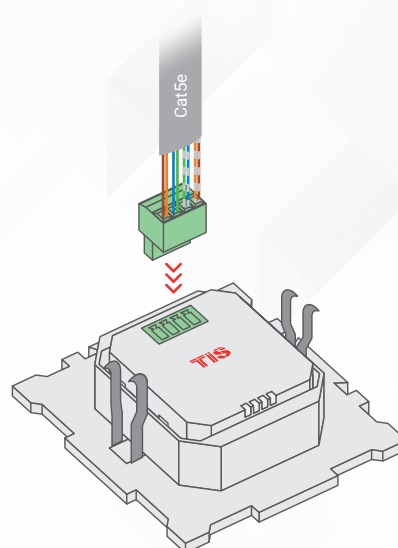
2»

Insert the Terre Module inside the Terre Base by pushing it inside. Please note the "TOP" label on the base in order to insert the module correctly.



3»

Connect the TIS-BUS Cable to the connector, and insert it into the Terre module.

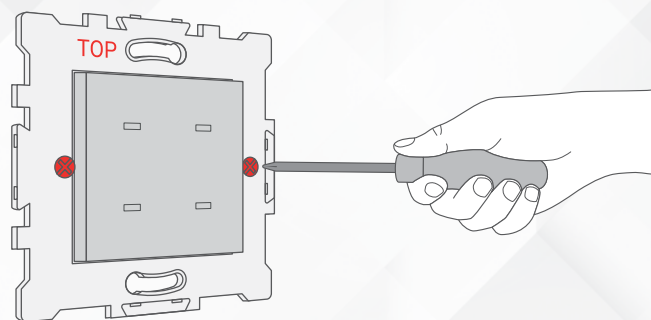




INSTALLATION STEPS

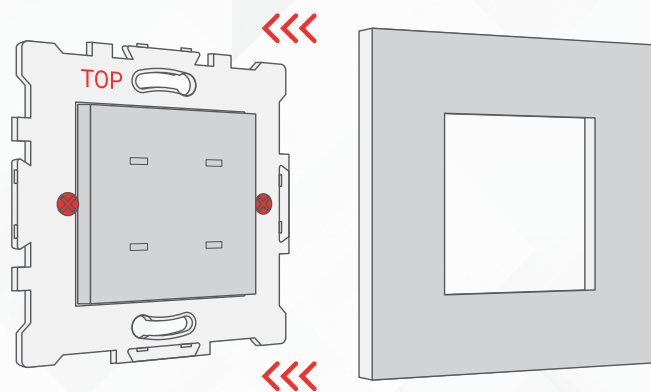
4»

Install the Terre base into the wall, and fix it with 2 screws.



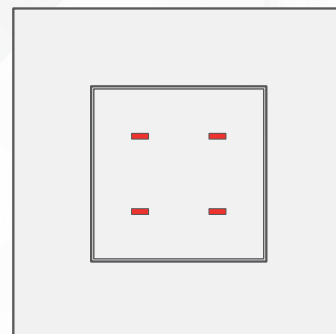
5»

Install the Terre cover on the Terre base.



6»

Turn the power supply ON. The Terre panel should turn on.

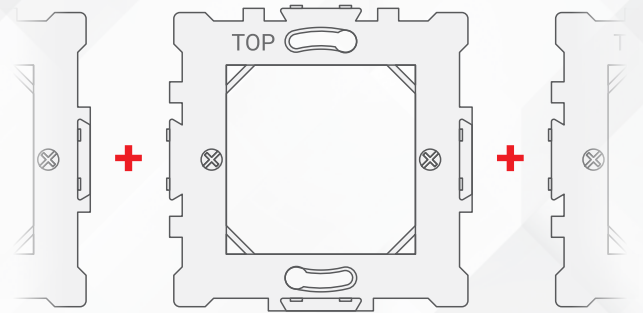




INSTALLATION STEPS



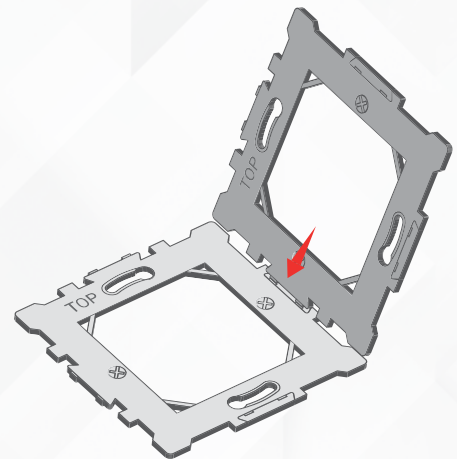
The Terre series is modular, so you can combine 2 to 4 different Terre panels, switches, or plugs together vertically or horizontally. To do so, follow these steps:



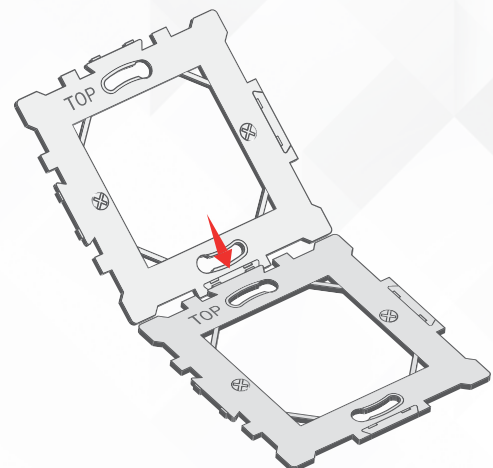
1

Combine 2, 3, or 4 bases together horizontally or vertically. Please note that all “TOP” labels should always be in the correct position.

- ▶ The following picture shows how to install 2 bases horizontally.



- ▶ The following picture shows how to install 2 bases vertically.

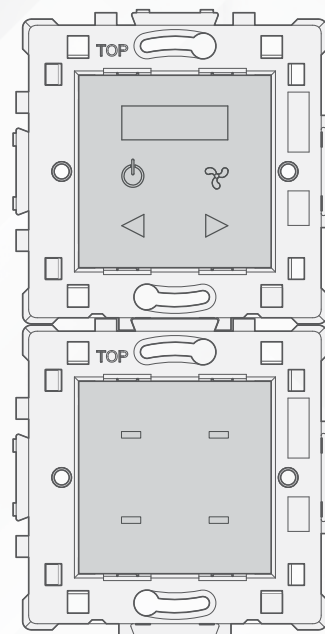




INSTALLATION STEPS

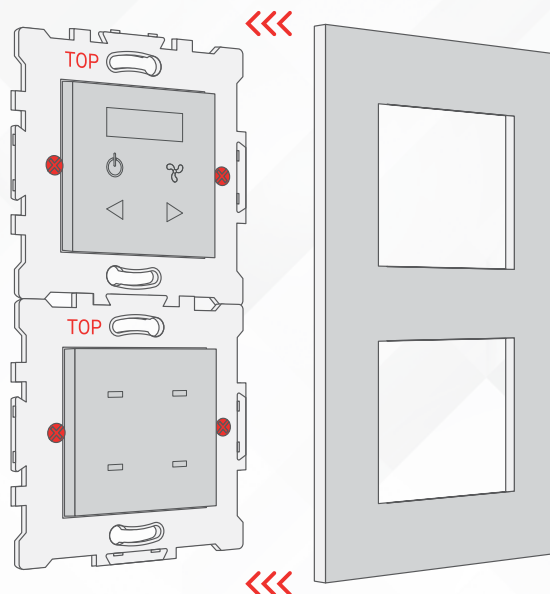
2»

Insert the Terre panels, switches, or plugs into the base.



3»

Cover with the Terre 2-, 3-, or 4-gang covers according to the combination.





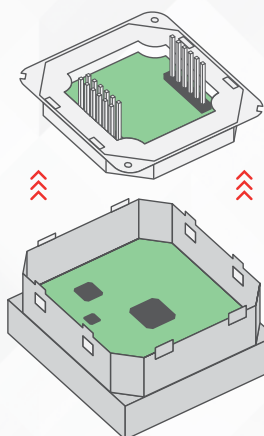
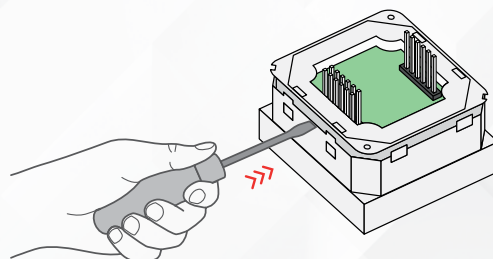
INSTALLATION STEPS



To use the Terre with Panel Addition, you should select Model TER-4G-A and follow these steps:

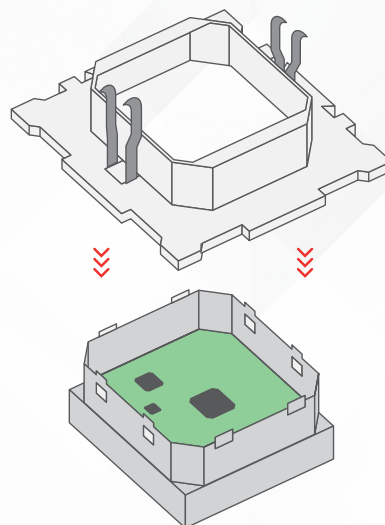
1 »

Remove the back Terre part.



2 »

Insert the Terre panel into the Terre base.

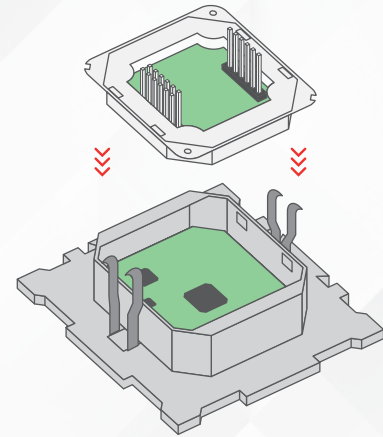




INSTALLATION STEPS

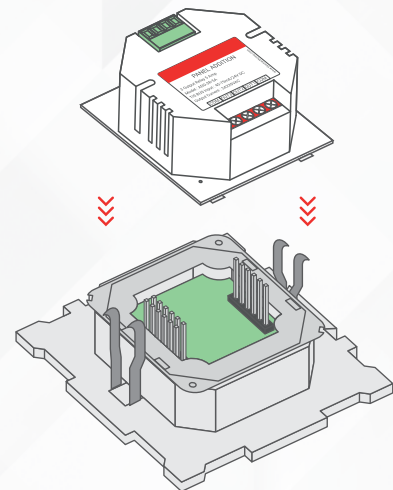
3»

Connect the back part to the panel again.



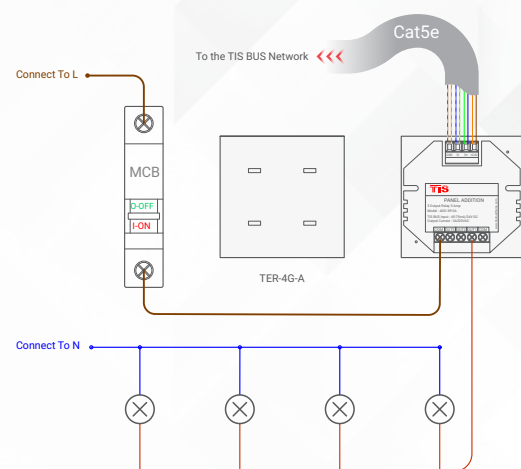
4»

Connect any panel addition type that supports the Terre panel.



5»

Follow the connection diagram as per the type of panel addition.

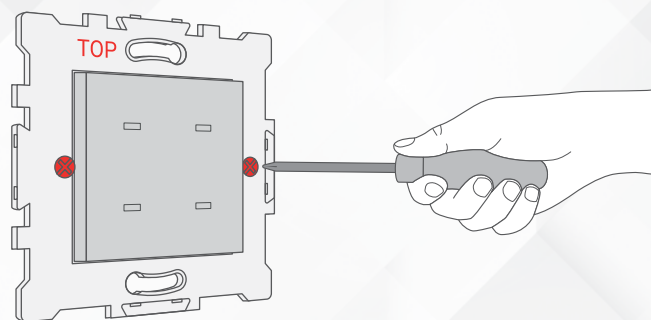




INSTALLATION STEPS

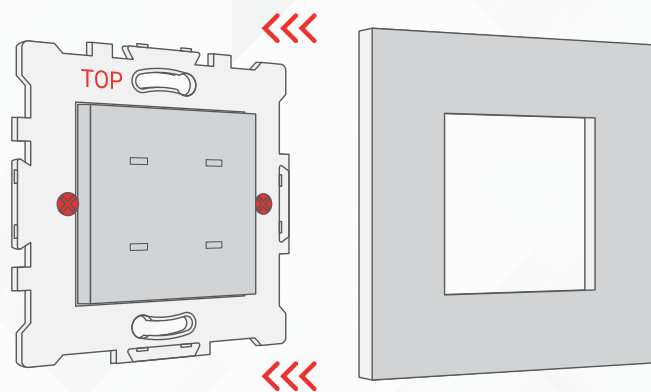
6»

Install the Terre base into the wall, and fix it with 2 screws.



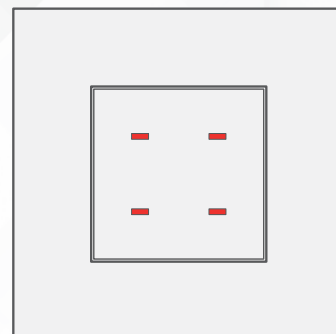
7»

Install the Terre cover on the Terre base.



8»

Turn the power supply ON. The Terre panel should turn on.



PAIRING (MANUAL PROGRAMMING)

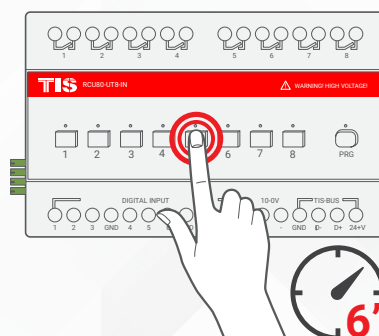


LIGHTS / SHUTTERS PROGRAMMING

You can pair the light channels with any wall panel. To do so, follow these steps:

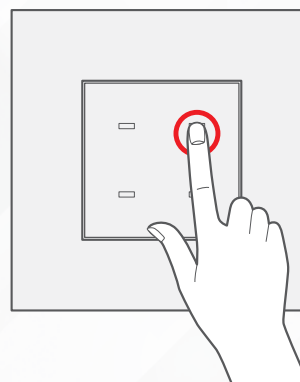
1 »

Press any button on any channel of a relay or dimmer module for 6 seconds so that the LED indicator light of that button starts blinking.



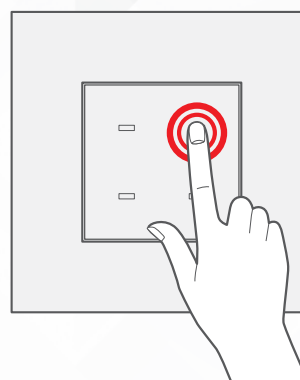
2 »

Shortly press on any button on the wall panel.



3 »

Test the button on the panel by short pressing it for ON/OFF and long pressing it to dim (if channel is dimmable).





USER MANUAL



USING THE PANEL

You can use the panel buttons 1-4; press on any button to get the settings that you programmed.

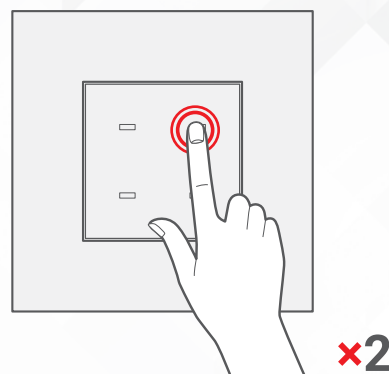
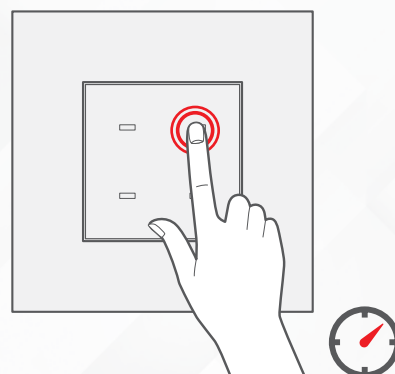
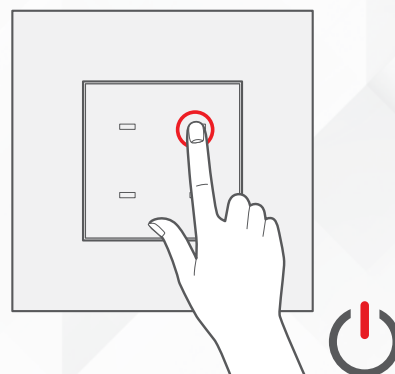
- ▶ Short press for ON/OFF or to run a scene.

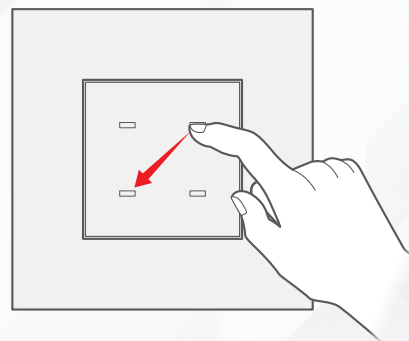
- ▶ Long press to dim or ramp up the lights.

- ▶ Double click to trigger a special programmed scene.



All panel LEDs' RGB can be programmed to different colors in ON/OFF status.





TROUBLESHOOTING



The panel's button LED blinks rapidly.

Reason: The panel address conflicts with another device in the TIS network. You need to press and hold any button for 6 seconds so that the panel can get a new address.



The panel buttons' LEDs do not turn ON, and the device is not powered.

Reason 1: There is no TIS-BUS power or no connection to the L/N input (if used AIR bus-3W converter).

Reason 2: The TIS 24V power supply is not connected to the TIS-BUS.



The wall panels fail to pair with other devices.

Reason 1: The TIS-BUS connection has a problem, or the wire has a short.

Reason 2: The manual programming function is disabled on the device (it is enabled by default).



The wall panels fail to control the device channels.

Reason 1: The TIS-BUS connection has a problem, or the wire has a short.

Reason 2: The programming address is faulty.