

55mm

55mm

55mm

55mm

55mm

55mm

55mm

55mm

55mm

BASIC INFORMATION



This smart carbon monoxide alarm uses ultra-low ZigBee wireless networking technology for carbon monoxide gas detection and notifies users with its LED & acoustic alarm when CO gas is sensed. It is perfect for use in places where CO detection is a priority, such as homes, bars, restaurants, etc.

WARNINGS & SAFETY INSTRUCTIONS

The following must be read, kept, and observed before installation:

- The detector is for indoor use only.
- Improper use or installation of the device can cause SERIOUS INJURY, DEATH, or LOSS/DAMAGE OF PROPERTY.
- Do not use in a manner other than what is outlined in this document.
- Do not try to open or to repair the device by yourself.
- Leave device repair to a technician or an expert.
- This product cannot be used to detect natural gas (methane), propane, butane, or other flammable gas.
- Clean once a month with a soft brush.
- Do not wipe the alarm with detergent or solvent. Doing so can cause a false alarm.
- Do not install in dirty, dusty, or greasy places.

MOUNTING THE DEVICE

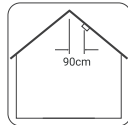
Flat Ceiling Mounting

The recommended mounting location for this product is the center of the ceiling. This is where CO gas first accumulates and then spreads. Keep at least 30cm away from lights and decorations and 15cm away from walls and corners.

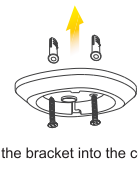


Sloped Ceiling Mounting

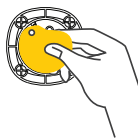
If the ceiling is sloping, install the product horizontally 90cm from the peak or apex of the ceiling. Rotate the bracket out counterclockwise from the mounting base.



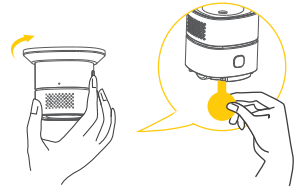
1 Screw the bracket into the ceiling



2 Remove the double-sided adhesive tape and stick the product onto the ceiling



3 Remove the battery insulating strip to power the product. Rotate the detector clockwise to secure it in the bracket



Note:
Select a distance that is at least 6m from a chimney and or gas equipment.
Do not install near a gas stove.
If using the 3M tape, please make sure the wall surface is smooth and clean

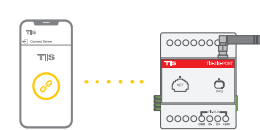
CONFIGURATION

1 Download the App

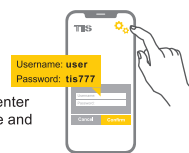
Search for TIS Control & download the app.



2 Set up your hub (if not already set in the application).



3 Go to Settings, and enter the default username and password.



4 Go to the TIS-BEE configuration button, and follow the instructions.



5 Add the Device

In the TIS-Bee configuration, press Add Device. Then, follow the instructions to add the device using the 2 available methods.



a. Scan QR Method



b. Search Method

Select whichever method you prefer, and follow the instructions on the app.

TECHNICAL SPECIFICATIONS

Product Dimensions
60mm×60mm×49.2mm

Standby current
≤20uA

Working voltage
DC3V (CR123A lithium battery)

Type
CO Detector

Wireless networking distance
≤100 meters (open environment)

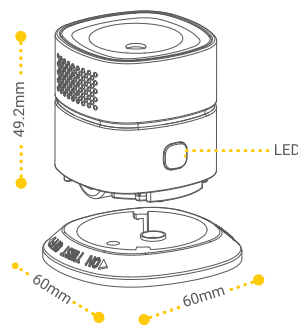
Communication Protocol
Zigbee® 3.0 Network

Item Weight
170g

Alarm current
≤60mA

Working environment
-10°C +50°C

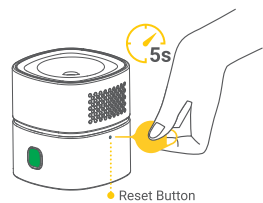
Alarm concentration
30ppm 120 minutes alarm
50ppm 60-90 minutes alarm
100ppm 10-40 minutes alarm
300ppm alarm within 3 minutes



LED BEHAVIOR

LED Status	Description
Green LED is on	Normal working status
Yellow LED is on	Fault
Red LED flickers	Gas leakage is detected
Red, green, and yellow LED blink alternatively	Device is warming up
Green LED blinks rapidly	Device is successfully reset to factory settings

RESET TO FACTORY DEFAULT



Press and hold the reset button for 5 seconds. When the indicator blinks rapidly, the reset has been done successfully.

TROUBLESHOOTING

Problem	Possible Cause	Solution
Unable to pair	Detector is away from the hub, or there are obstacles	Move detector closer to the hub

Product specifications, size, shape, and prices are subject to change without notice, and actual product appearance may differ from that depicted on the packaging.

TIS TIS CONTROL LIMITED

RM 1502-p9 Easey Comm Bldg 253-261
Hennessy Rd Wanchai, Hong Kong
www.tiscontrol.com



TIS-BEE
Carbon Monoxide Detector

User Manual



Please read the user manual carefully before operation