

45mm

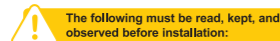
BASIC INFORMATION



Powered by Zigbee 3.0, this mini dimmer can be used to dim or switch LED and halogen lights manually or remotely over internet. It features a conventional push button, and due to its functional dimensions, it can be mounted to digitize light switches in every space.

1

WARNINGS & SAFETY INSTRUCTIONS

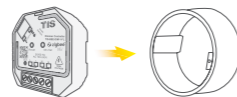


The following must be read, kept, and observed before installation:

- The detector is for indoor use only.
- Improper use or installation of the device can cause **SERIOUS INJURY, DEATH or LOSS/DAMAGE OF PROPERTY.**
- Do not use in a manner other than outlined in this document is.
- The installation may only be carried out by a qualified electrician.
- Installation on flammable materials is not permitted.

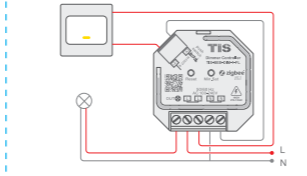
2

MOUNTING THE DEVICE



- Fit inside the junction box and follow the connection diagram to connect to power, load and push button switch

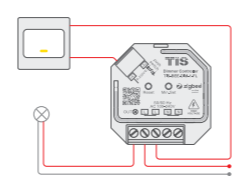
2



- L - terminal for live lead
- N - terminal for neutral lead
- +A1 - terminal for push switch
- A2 - terminal for grounding to the switch connected to the dimmer
- Out - output terminal of the dimmer (controlling connected light source)

- Once connected with a push switch, click the push switch to switch ON/OFF, press and hold down to increase/decrease light intensity.

3

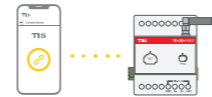


- N - terminal for neutral lead
- +A1 - terminal for push switch
- L - terminal for live lead
- Out - output terminal of the dimmer (controlling connected light source)

4

CONFIGURATION

- Download the App
Search for TIS Control & download the app.



- Set up your hub (if not already set in the application).

5

- Go to Settings, and enter the default username and password.



- Go to the TIS-BEE configuration button, and follow the instructions.



6

- Add the Device
In the TIS-Bee configuration, press Add Device. Then, follow the instructions to add the device using the 2 available methods.



a, Scan QR Method



b, Search Method

Select whichever method you prefer, and follow the instructions on the app.

7

TECHNICAL SPECIFICATIONS



- Communication Protocol: Zigbee® 3.0 Network
- Item Weight: 60g
- Product Dimensions: 45mm×45mm×21mm
- Material: ABS Plastic
- Voltage: 100-240V AC
- Output: 1Ch >400 W
- Waterproof grade: IP20
- Operating Humidity: <90%

Can be controlled by universal 8-230V input single wire push switch/Reset

9

45mm

LEARNING ZIGBEE REMOTE

- Short press "Reset," button 4 times (Or reset power of the device 4 times) to start Learning mode (connected light flashes twice), 180 seconds timeout, repeat this step.



- Set the green power remote into Learning mode, please refer to its manual

10

- Connected light will flash twice to indicate successful learning. Then the remote can control the device



DELETE LEARNING ZIGBEE REMOTE

- Short press "Reset," button 3 times (Or reset power of the device 3 times) to start delete Learning mode (connected light flashes slowly), 180 seconds timeout, repeat this step



10

- Set the paired green power remote into Learning mode, please refer to its manual

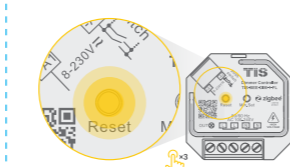


- Connected light will flash 4 times to indicate successful deleting



11

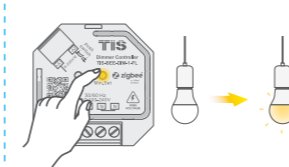
RESET TO FACTORY DEFAULT



- Short press the "Reset" button 3 times (Or reset power of the device (initiator node) 3 times) to enable Find and Bind mode (connected light flashes slowly) to find and bind target node. After a 180 seconds timeout, repeat this step.

13

DELETE THE MINIMUM BRIGHTNESS



- Adjust the brightness to 100% from the Zigbee hub or the controller interface or a remote, then press and hold down the "Min. Set" key on the dimmer until the connected light flashes. This means the minimum brightness is deleted successfully.

14

TROUBLESHOOTING

Problem	Possible Cause	Solution
Unable to pair	Module not in pairing mode	Reset the Module to factory mode.
	Module is away from the hub, or there are obstacles.	Move Module closer to the hub.
	Module is connected to another hub network.	Reset the module to factory default.

15

Product specifications, size, shape, and prices are subject to change without notice, and actual product appearance may differ from that depicted on the packaging.

TIS TIS CONTROL LIMITED

RM 1502-p9 Eassey Comm Bldg 253-261
Hennessy Rd Wanchai, Hong Kong
www.tiscontrol.com



TIS BEE User Manual

Zigbee ACM Dimmer



Please read the user manual carefully before operation