

INSTALLATION MANUAL

TIS CLICK PANEL

1/2/3/4/6 Buttons

Model: TIS-CLK-xG-1F

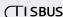





TIS
CONTROL EVERYTHING

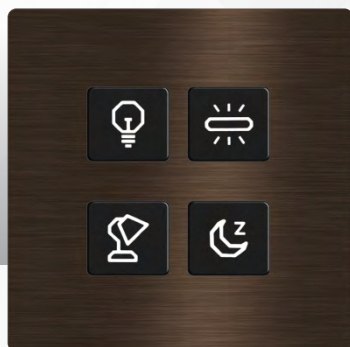


PRODUCT INFORMATION

With its elegant classical design, the Click Series available in three different colors with a stylish labeled push buttons. This capability is of great value for smart hotel and homes, because users can enjoy a combination of classic and new technology.

PRODUCT SPECIFICATIONS

 TIS Bus	Number of devices on 1 line Bus voltage Current consumption	Max. 64 12-32 V DC <35 mA / 24 V DC
 Operating and display elements	1-6 Buttons Indicator LED TIS bus	For controlling lights, scene, etc... 1-6 White and Orange LED TIS Protocol messages and commands
 Functions	1 Press Long Press Double click	ON/OFF/Scene Dim or ramp the lights Extra Scene
 Dimensions	Width x length x height	86mmx86mmx7mm(32mm including switch box)
 Housing	Materials Casing color Internal Parts color IP rating	PC anti fire Aluminum Black IP 30
 Temperature range	Operation Storage Transport	-10...60°C -20...50°C -25...75°C



BARCODE (UPC-A)



6 58921 80047 8



Read Instructions

We recommend that you read this Instruction Manual before installation.



Data Cable

Use screened stranded RS485 data cable with four twisted pairs. Configure devices in a "Daisy Chain."

Do not cut or terminate live data cables.



Safety instructions

Electrical equipment should only be installed and fitted by electrically skilled persons.

Failure to follow the instructions may cause damage to the device and other hazards.

These instructions are an integral part of the product and must remain with the end customer.



Warranty

There is a two-year warranty provided by law. The hologram warranty seal and product serial number are available on each device.



Programming

This device can be tested and programmed manually. Advanced programming requires knowledge of the TIS Device Search software and instruction in the TIS advanced training courses.



Simple Installation

You can use 2 screws to install this panel on the wall; it fits European round and UK square junction box sizes.



Mounting Location

Install in a dry, indoor area with a suitable temperature and humidity range.





INSTALLATION STEPS

1 >>

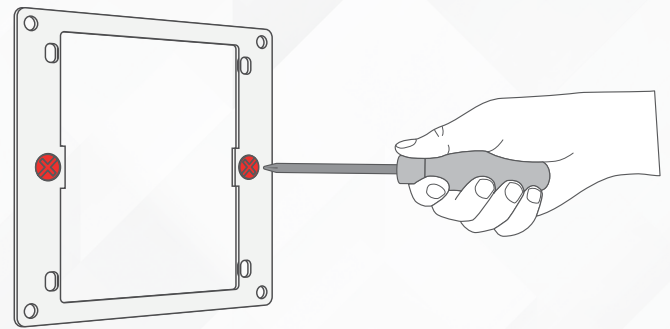
Turn off the TIS power supply.



WARNING! HIGH VOLTAGE

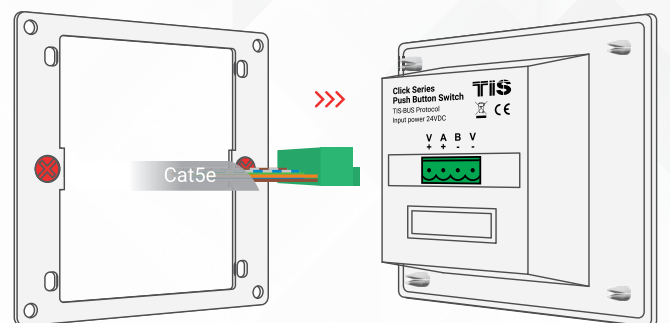
2 >>

Screw the junction box



3 >>

Connect the TIS-Bus Cable and insert it into the module.

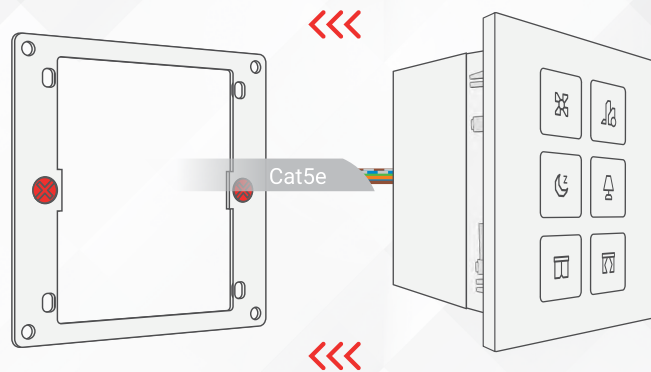




INSTALLATION STEPS

4»

Push the Click Module into the base



5»

Turn on the power; the Click panel should activate





PAIRING (MANUAL PROGRAMMING)

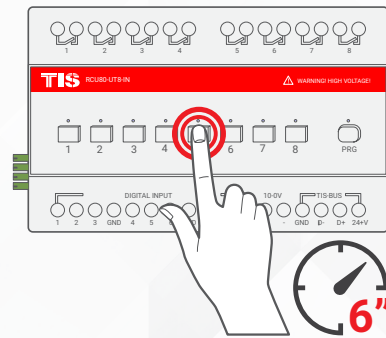


LIGHTS / SHUTTERS PROGRAMMING

You can pair the light channels with any wall panel. To do so, follow these steps:

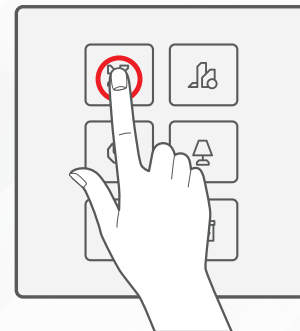
1 »

Press any button on any channel of a relay or dimmer module for 6 seconds so that the LED indicator light of that button starts blinking



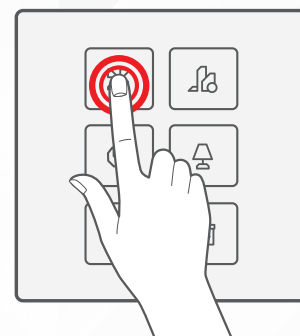
2 »

Shortly press on any button on the wall panel



3 »

Test the button on the panel by short pressing it for ON/OFF and long pressing it to dim (if channel is dimmable)





USER MANUAL



USING THE PANEL

You can use the panel buttons 1-6; press on any button to get the settings that you programmed.

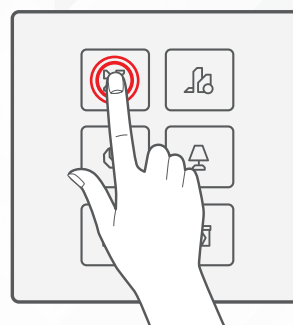
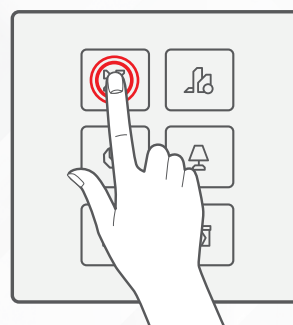
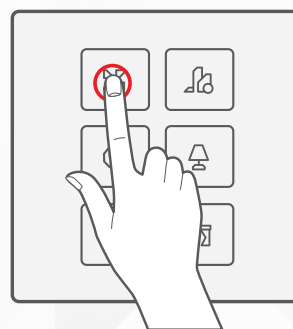
- ▶ Short press for ON/OFF or to run a scene

- ▶ Long press to dim or ramp up the lights

- ▶ Double click to trigger a special programmed scene



All panel LEDs' RGB can be programmed to different colors in ON/OFF status.

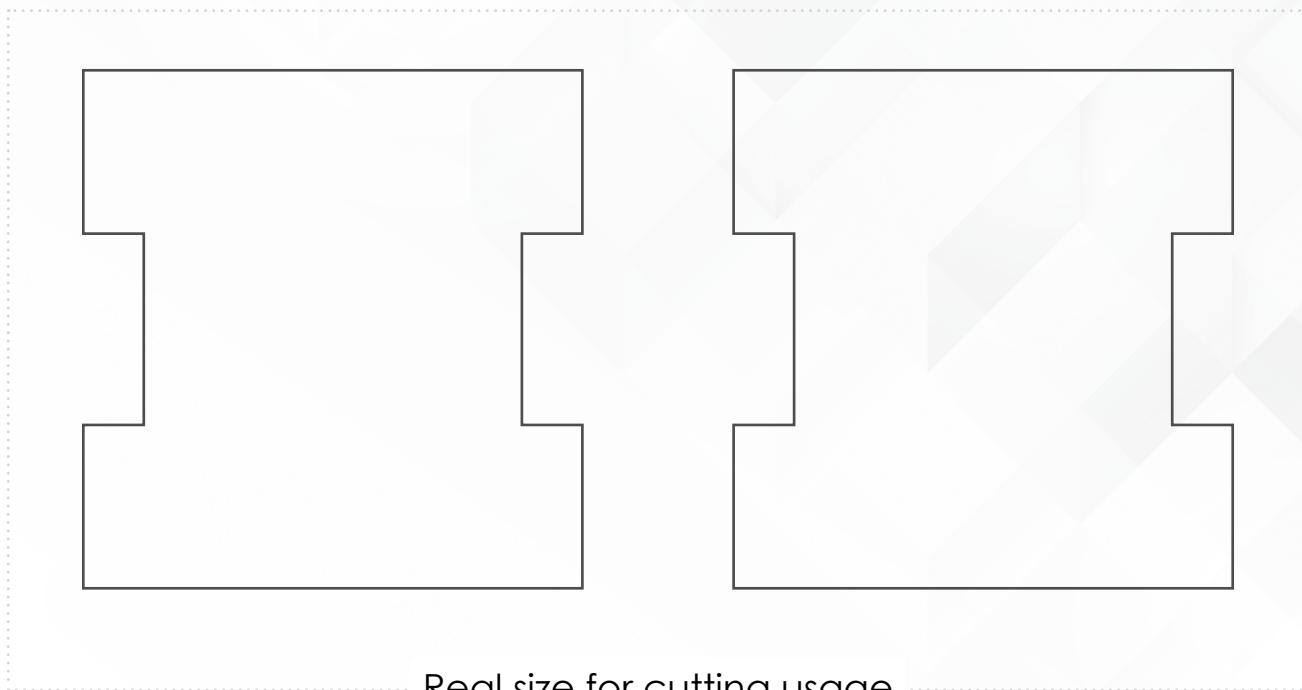
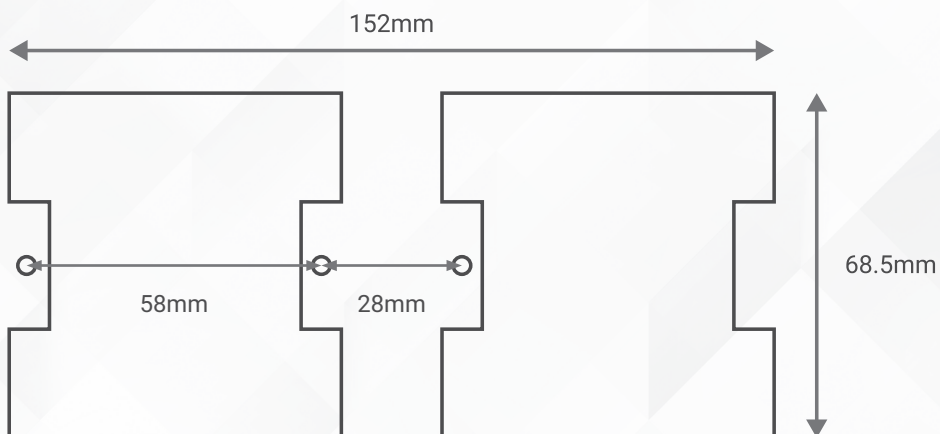




USER MANUAL



SIZE FOR CUTTING USAGE





TROUBLESHOOTING



The panel's button LED blinks rapidly.

Reason: The panel address conflicts with another device in the TIS network. You need to press and hold any button for 6 seconds so that the panel can get a new address.



The panel buttons' LEDs do not turn ON, and the device is not powered.

Reason 1: There is no TIS-BUS power or no connection to the L/N input (if used AIR bus-3W converter).

Reason 2: The TIS 24V power supply is not connected to the TIS-BUS.



The wall panels fail to pair with other devices.

Reason 1: The TIS-BUS connection has a problem, or the wire has a short.

Reason 2: The manual programming function is disabled on the device (it is enabled by default).



The wall panels fail to control the device channels.

Reason 1: The TIS-BUS connection has a problem, or the wire has a short.

Reason 2: The programming address is faulty.