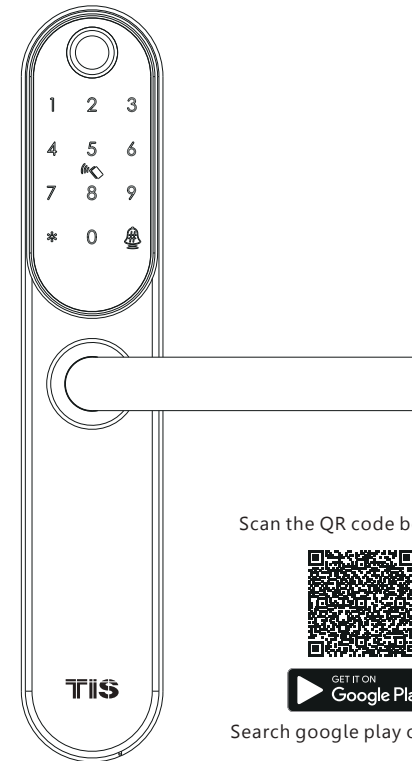




USER MANUAL- SMART DIGITAL LOCK

TIS-K710 Series



Scan the QR code below to download the APP



Search google play or APPLE store with TISLOCK



IC Card



Passcode



KEY



APP



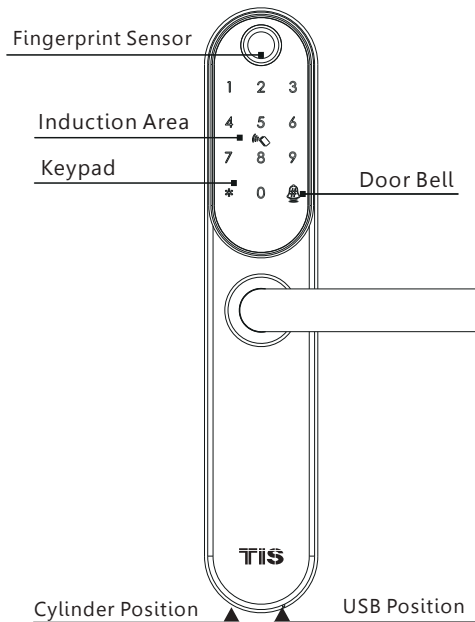
Fingerprint

1 SYSTEM INTRODUCTION

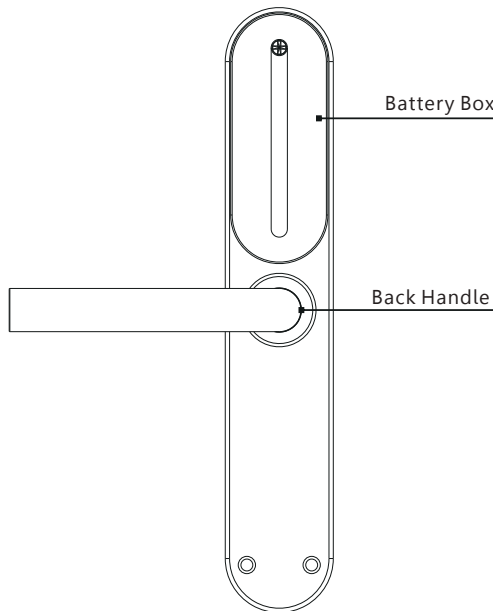
Material	Stainless Steel,ABS,Acrylic
Available Color	Black Nickel/Stainless Steel
Door Thickness	35-64mm
Communication	Bluetooth 5.0
Support OS	iOS 12.0 or above, Android 4.0 or above
Battery Life	7000 times normal unlock(10-12 months)
Power Supply	DC 6v:4pcs AAA alkaline batteries
Static Current	<50uA
Dynamic Current	<200mA
Unlock Way	IC card,passcode,fingerprint,APP,manual key
Unlock Time	1-1.5 seconds
Working Temperature	-20~50 degree
Working Humidity	10%~95%
Factory Password	123456,after setting,factory passcode will be invalid
Available Mortise	5050 mortise,4585/6085/7085/5572/6072 mortise as option
Packing Box	Carton box with EPE inside
User Capacity	Fingerprint100;Card: 200;passcode:150; 1 administrator

2 PRODUCT OVERVIEW

FRONT PANEL



BACK PANEL



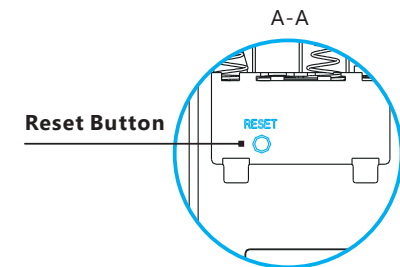
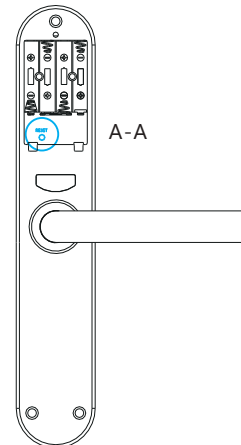
3 LOCK ACCESSORIES

a	b	c	d	e
1 Pcs Front Panel	1 Pcs Back Panel	1 Pcs Mortise	1 Pcs Strike Plate	1 Pcs Strike Box
Door Thickness Quantity	* f	* g	* h	* i
	35-44mm	M5x30:1	M5x20:1	8x8x60:1
	45-54mm	M5x40:1	M5x20:1	8x8x70:1
	54-64mm	M5x50:1	M5x20:1	8x8x80:1
j				k
Smart Keycard				2 Pcs Manual Key
2Pcs Keycard				

4 RESET TO FACTORY STATE

⚠ ATTENTION

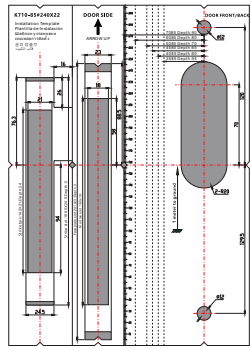
There is one Reset button on the back of rear panel. you can press this button for **3** seconds with sound tip,"**please input initialization passcode,"enter: 000#, with sound: "Successful"**. Then the lock is under factory state, the default master password is: **123456 with # to confirm**. you can open the door with any fingerprint.



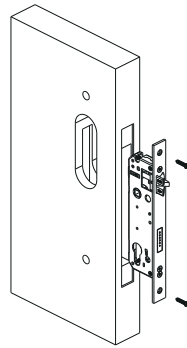
5 PREPARING TO INSTALL

5.1 Line Drawing

Draw a horizontal center line inside and outside the door at 1 meter from the ground. Fold the template, make the handle center line align at the door horizontal center line, then draw out the hole lines at front and side.



Template



Trepanning



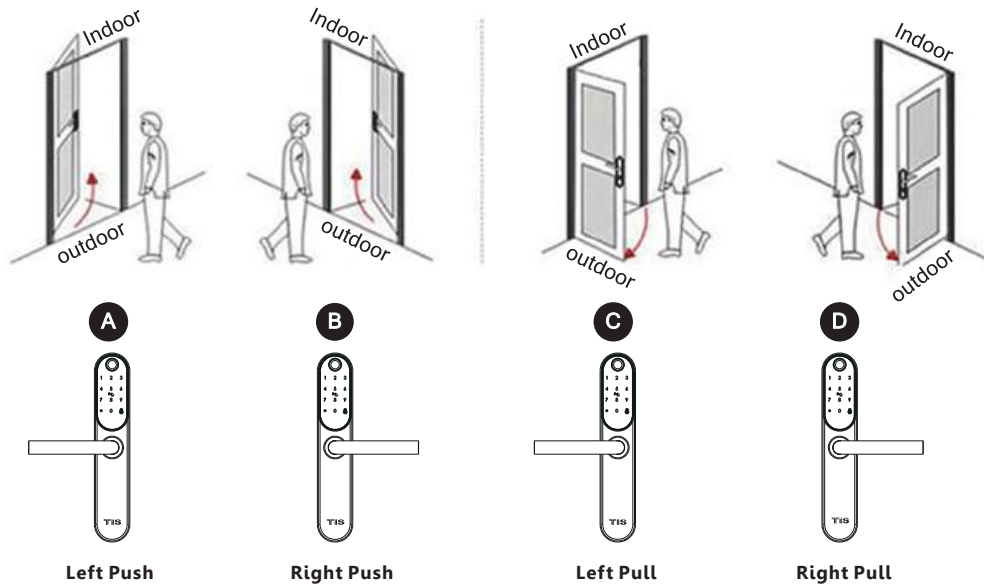
Screwdriver



5.2 Determining Lever Handing

The handle of the door is determined from the secure side, The term "Secure" means the side from which you initially unlock and enter the door from outside, or the hinge side for left/right open.

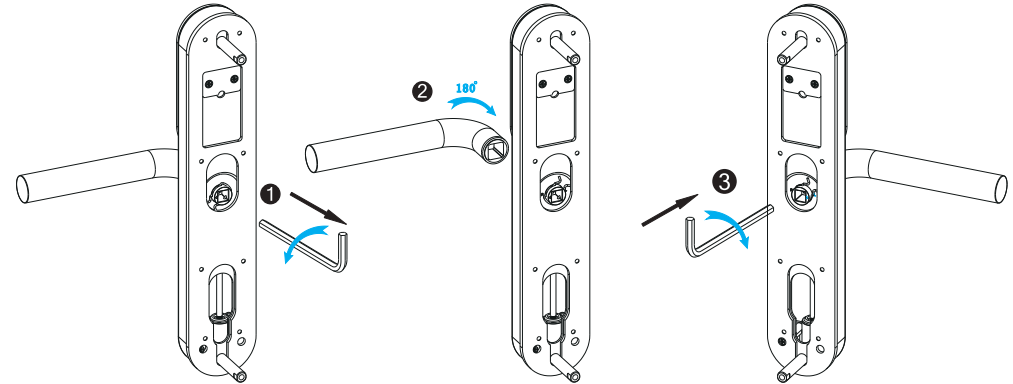
⚠ Standing outside the door, there is left/right open and push/pull to open as the below diagram:



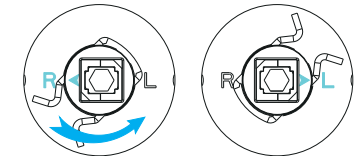
5.3 Change Handle Direction

1. Adjust the Front Handle Direction (From right to left)

- 1.1 Use the Allen key to loosen the screw in the picture.
- 1.2 Turn the handle 180 degrees counterclockwise.
- 1.3 Tighten the screw and adjust the handle.

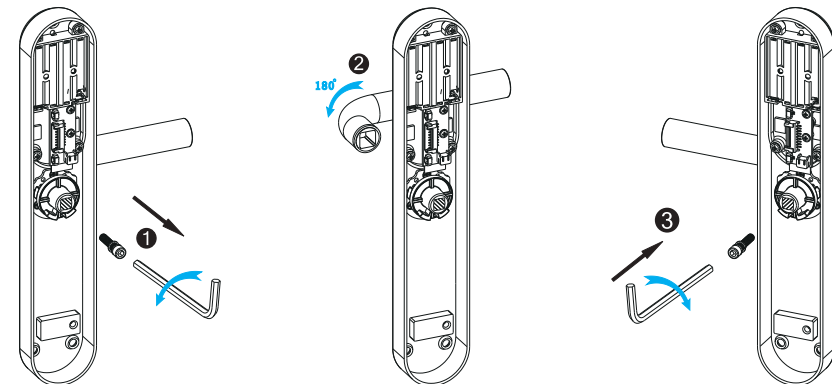


⚠ Make sure the arrow points to the right one position points according to the direction of the door on the clutch, if not, you cannot unlock the door



2. Adjust the Back Handle Direction

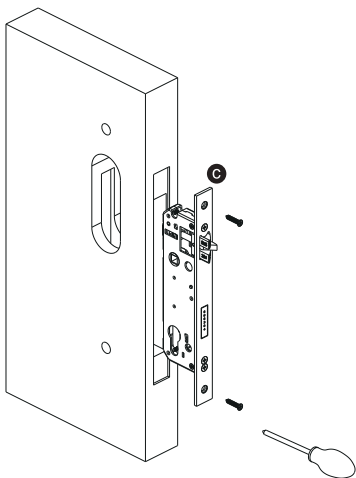
- 2.1 Use the Allen key to remove the screw in the photo.
- 2.2 Turn the handle 180 degrees clockwise.
- 2.3 Tighten the screw and adjust the handle.



6 INSTALLATION STEPS

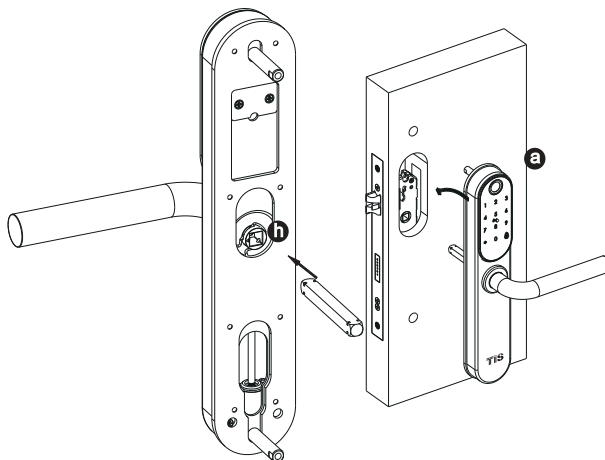
6.1 Assemble the Mortise

Assemble the mortise(c) into the slot which is drilled according to the template.



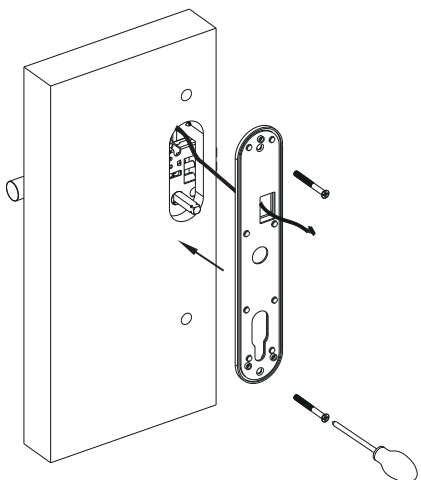
6.2 Assemble the Front Panel

1. Press hard the spindle (h) into the handle hole.
2. Fix the front panel(a) on the door and cross the cable through the hole.



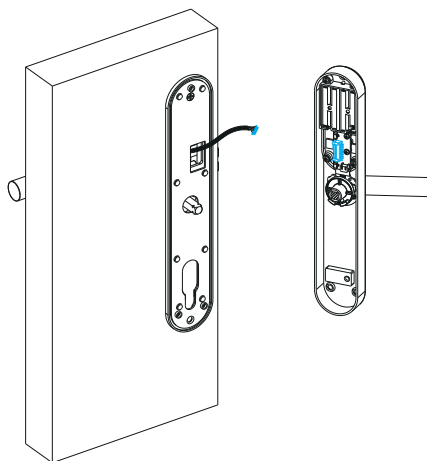
6.3 Fix the Back Cover Plate

Tighten the screw for the back cover plate with the front panel solenoid.



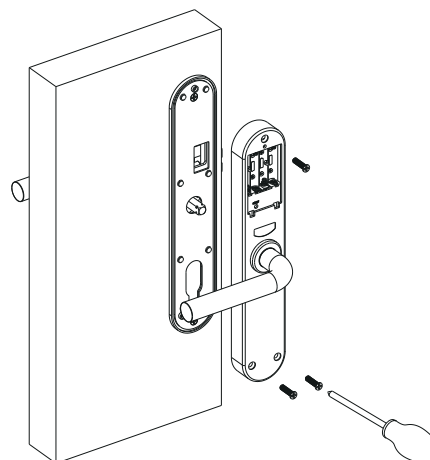
6.4 Connect the Cable

Connect the cable with the board on the rear panel.



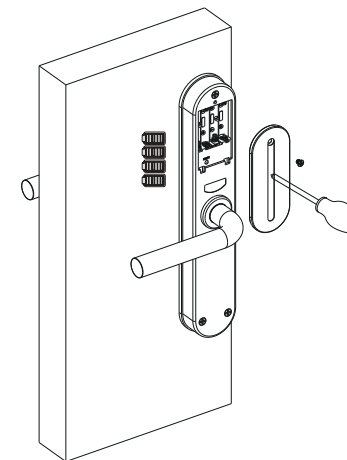
6.5 Fix the Lock Panel

Tight the back panel with front panel with the three long screws.



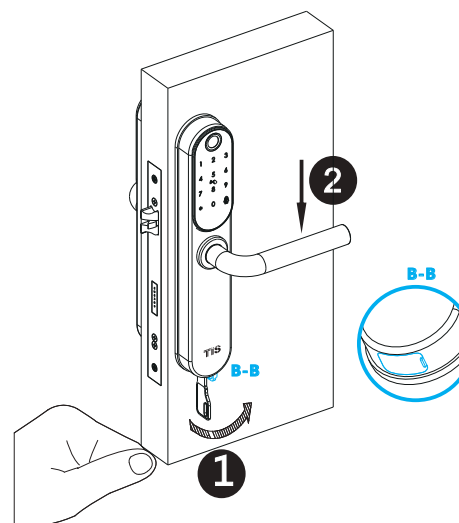
6.6 Assemble the Battery Box

Insert 4 pcs AAA alkaline batteries and fix the cover with screws as shown in the picture



6.7 Unlock the Lock with Manual Key

1. Pull the silicone on the front panel B-B
2. Insert the manual key and turn 90 degree then press down the handle to unlock the door.



APP OPERATION STEPS

Search Google play or APPLE Store with TISLOCK to download the APP.
Install it or scan the below QR code we provided to install the APP program.
You can also turn to us to download the application. please read the manual carefully before installation and keep it properly.



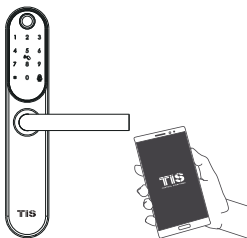
- Please turn on your phone's Bluetooth function before any operation.

Attention

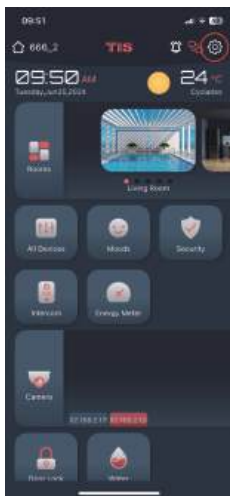


1. Add one smart lock on your phone

- When adding the door lock, operations must be completed near the lock and the keypad is activated during paring.

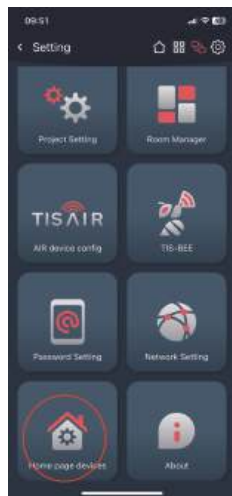


Step1: Open the app and enter the settings page



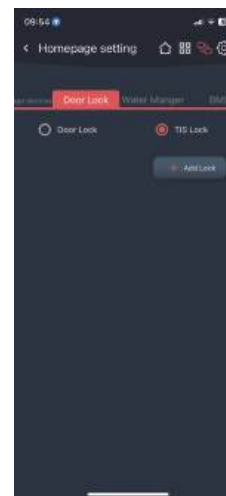
1-1

Step2: Enter the home page settings page

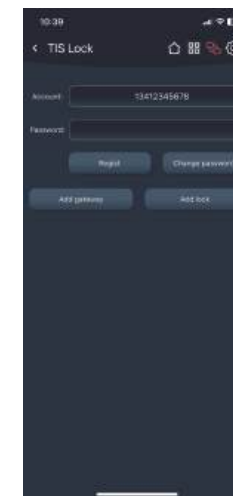


1-2

Step3: Select the TIS Lock function under Door Lock and click the Add Lock button



1-3

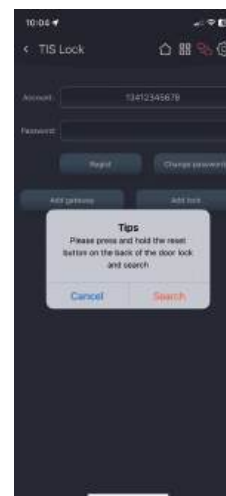


1-4

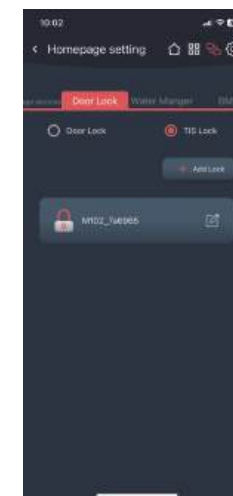
Step4: Enter your account and password and click Register to register your account for use with TIS lock. If you already have an account, you can enter it directly to log in automatically.

2. Adding Locks

Step1: Please press and hold the reset button on the door lock for 3 seconds to put the door lock into the configuration state, then click Add lock - Search, the app will automatically configure the door lock to the account via Bluetooth.



2-1

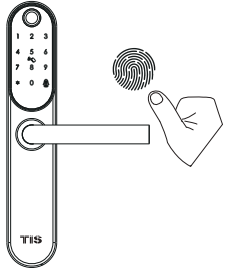


2-2

Step2: If successful, it will return to the previous tab and display the door lock in the list. You can modify the name of the lock and delete it by swiping left.

3. Add fingerprint

Step1: Click on the lock in the list to enter the lock configuration page, and click the add fingerprint button



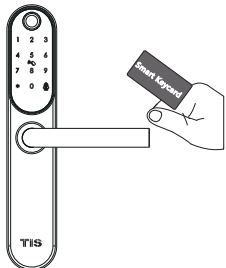
3-1 3-2

Step2: The lock will enter the fingerprint adding state. At this time, repeatedly press the fingerprint recognition area of the door lock with your finger until the addition is completed. The fingerprint name can be modified and deleted

4. Add IC card

Step1: Click on the lock in the list to enter the lock configuration page, and click the add IC card button

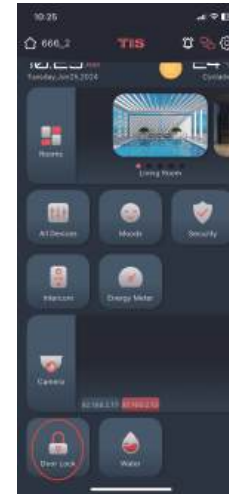
Step2: The lock will enter the IC card adding state. At this time, place the IC card in the IC card identification area and the addition will be completed. The IC card name can be modified and deleted



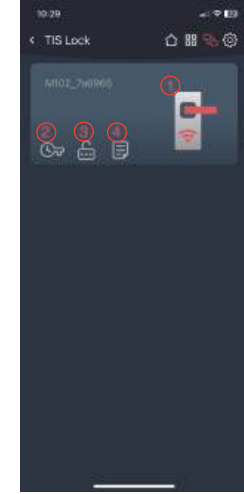
4-1 4-2

5. Lock control

Step1: Go to the home page and click the Door lock button



5-1



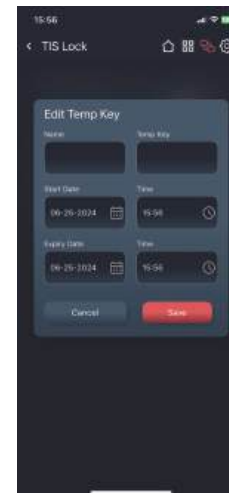
5-2

Step2: Function Description

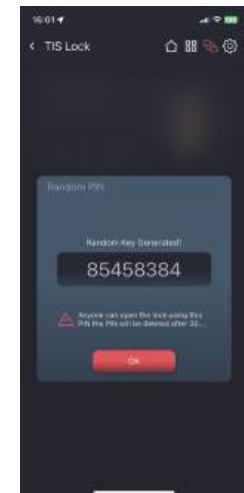
① Turn on the door lock button to unlock via Bluetooth and remote. Remote unlocking requires configuring the gateway (see "6" for details) and turning on the Remote unlock button in the door lock settings



② Temporary password settings, you can add a password that can be used within a period



5-2-②



5-2-③

③ Random password: randomly generate a password, which is valid for 30 minutes and can be deleted at any time in the temporary password list



④ Message log, showing the relevant messages triggered by the door lock



6. Add a gateway - optional

- The new version Wi-Fi gateway is with improved performance and long communication distance. please refer to the below parameters and operations:

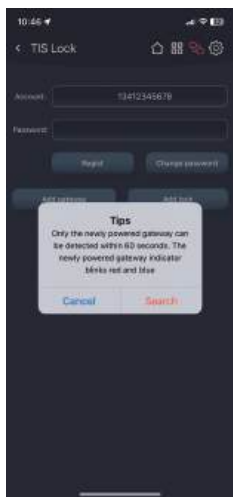
Model: TIS-Lock2_HUB
Dimension: 70x70x26mm
Network: Wi-Fi 2.4G
IEEE Standard: 802.11b/g/n
Power Interface: Type C USB
Power Input: DC5V/500mA
Light Status:



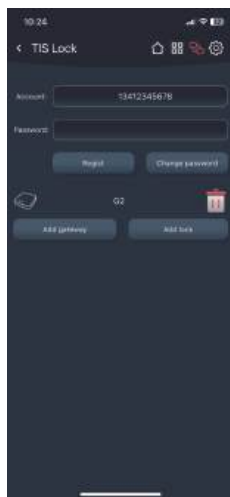
When the gateway is powered on:

- Light flashes alternately with red and blue: Stand-by mode, ready for connection
- Blue light: working mode
- Red light: network failure

Step1: According to see “1”, enter the TIS Lock settings tab and add a gateway, and enter the phone's wifi password to pair the gateway with the network, then click the search button

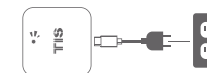


5-1



5-2

Step2: Re-insert the gateway into the power source to start it up. The gateway will enter the network configuration state to pair with the app. After successful pairing, the gateway will be bound to the account. When the door lock and gateway are nearby and under the same account, they will automatically match and connect, which takes about ten minutes. The gateway can modify and delete the name.



Step3: Re-insert the gateway into the power source to start it up. The gateway will enter the network configuration state to pair with the app. After successful pairing, the gateway will be bound to the account. When the door lock and gateway are nearby and under the same account, they will automatically match and connect, which takes about ten minutes. The gateway can modify and delete the name.



5-3

7. Troubleshoot and Solution(FAQ)

Question 1: why the lock is always open when I fixed it on the door at first time?

Answer: The lock is under factory state before leaving factory, it is to ensure the user can unlock the door any time during installation when they did not take the manual key in hand. you can power on the lock with 4pcs AA alkaline batteries and the motor will activate to run one time, the lock will be locked after 5 seconds.

Question 2: what kind of battery shall we use?

Answer: This lock is highly recommended to be powered on by 4pcs AAA alkaline batteries, do not mix old and new batteries or other Zn/Mn batteries!

Question 3: My door is left open, how to change the lock handle?

Answer: you can refer the page 3 and page 4 to change the handle for front panel and back panel and ensure the arrow point to L.

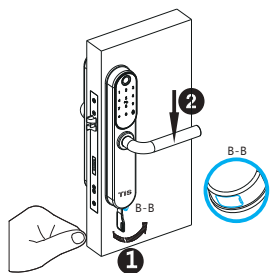
Question 4: I changed my handle, but it can not be unlocked from outside, only can be pulled upward to unlock.

Answer: A. Right open, please ensure the arrow is adjusted and point to the R on the clutch;
B. Left open, please ensure the arrow is adjusted and point to the L on the clutch



Question 5: I insert the manual key and turn but I can not unlock the door.

Answer: Pull the silicone on the front panel B-B, Please insert the manual key and turn, then press handle to unlock the door, refer the photo below:



Question 6: How can lunlock the door remotely?

Answer: One G2 gateway is required to configure with the lock, then yon can press the icon button on the APP, refer the photo below:

