

# INSTALLATION MANUAL

## PROFESSIONAL SECURITY MODULE

### SMS with 4 Zone Security Module Port

MODEL: TIS-SEC-PRO



## PRODUCT INFORMATION

The Security Professional Module enhances security systems with SMS communication, offering 4 sensor zones, 1 relay output, and battery backup for reliable operation. Ideal for remote monitoring and control, it's perfect for customized security solutions.

## PRODUCT SPECIFICATIONS

	<b>Input</b>	Dry Inputs Battery Power SIM Slot	4X Dry Inputs Buckup 12V Battery Input SIM CARD
	<b>Output</b>	Relay	1x Relay Output 1A
	<b>Function programmable options</b>	SMS Wired Zone 1 Relay PRG button	Sending 16 SMS to 8 numbers Receiving 16 SMS from 8 numbers 4 Hardwired Zone To Link to Siren or other output To Broadcast Address
	<b>Security</b>	Levels Arming commands Alarm Commands	Vacation, Away, Night, Day, Disarm 20 for each level 20 for each level
	<b>Dimensions</b>	Width x length x height	73mm x 76mm x 90mm
	<b>Housing</b>	Materials Casing color IP rating	ABS anti fire Black Gray IP 20



BARCODE (UPC-A)





### Read Instructions

We recommend that you read this Instruction Manual before installation.



### Mounting Location

Install in a dry, well-ventilated location. Controllers may emit some mechanical noise. Take this into account when deciding on a mounting location.



### Safety instructions

Electrical equipment should only be installed and fitted by electrically skilled persons. Failure to observe the instructions may cause damage to the device and other hazards. These instructions are an integral part of the product and must remain with the end customer.



### Data Cable

Use screened stranded RS485 data cable with four twisted pairs. Configure devices in a "Daisy Chain."

**Do not cut or terminate live data cables.**



### Programming

Advanced programming requires TIS Device Search software. Advanced software programming knowledge should be obtained in the advanced training courses.



### Warranty

We provide a warranty as required by law. A hologram warranty seal and product serial number are provided on each device. Please send the description of the defect with Product S/N to our dealer network.



### Simple Installation

DIN Rail mount facilitates installation. Fixing points are provided for installation without the use of DIN rail.





## INSTALLATION STEPS

1»

Turn Off TIS Power supply

2»

Mount the device on a DIN rail inside an approved enclosure. The device can also be installed without the use of DIN rail by two mounting screw holes

3»

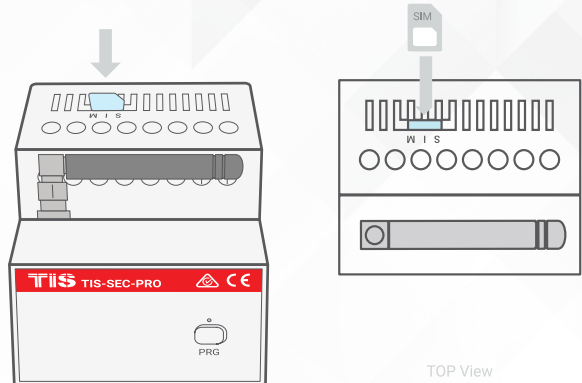
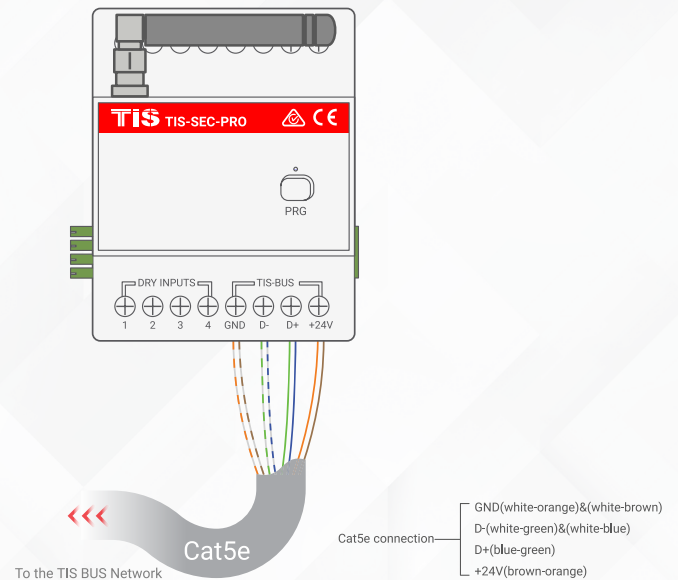
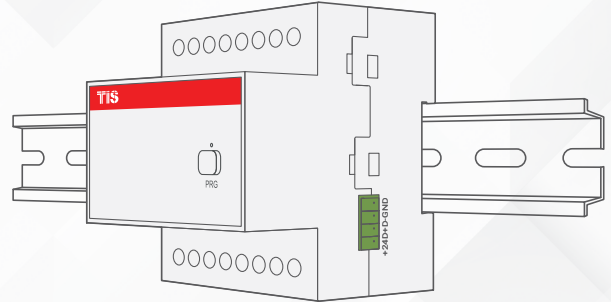
Connect a Cat5e TIS network data cable to the TIS-BUS port as per the connection diagram. No need to loop the TIS-bus cable if 2 DIN rail modules are connected together from the side bus train terminal

4»

Insert the SIM card into the slot on top of device



**WARNING! HIGH VOLTAGE**

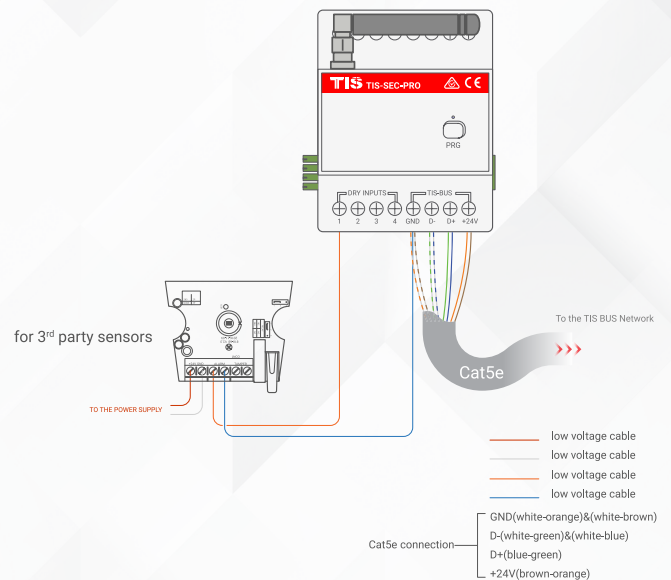




## INSTALLATION STEPS

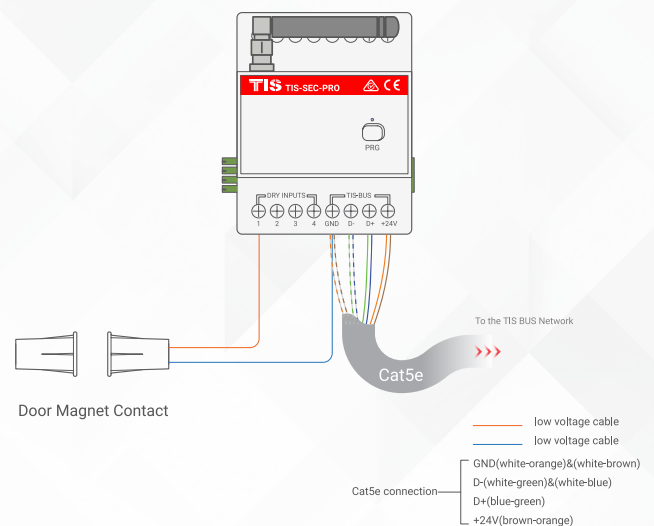
5»

Also, you can connect any 12V operated smoke detector or any 3<sup>rd</sup> party sensor with NC/NO connection to the 12V GND and Z1-Z3 terminals as per the diagram



6»

You can connect 2 digital inputs to any switch or window magnet







## TROUBLESHOOTING



**PRG Button Blinks Red Color Rapidly**

**Reason:** The module's address conflicts with another device in the TIS network. You need to press and hold the PRG button for 6 seconds so that the module can get a new address.



**Device PRG LED is not Blinking;  
Device not Powered**

**Reason:** Device is not powered on; no TIS-BUS 24V supply connected to the device.



**Device Search software can not communicate with the module**

**Reason 1:** Device search software was opened before setting the PC IP address; you need to restart your software.

**Reason 2:** If linked by ethernet cable, check the connectivity, disable the WiFi on your laptop/PC, and restart the software.

**Reason 3:** TIS software is opened in the same PC. Close all TIS software and open just one.



**Device Search software can only search the IP module but no other TIS devices.**

**Reason:** Could be a short in connection between devices in TIS bus network .